

PHILIPS

Ultrasound

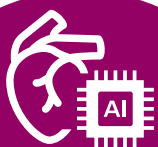
CVx platform

A powerful platform for the next dimension in echocardiography



When you choose Philips, you're choosing our innovative and industry-leading¹ cardiovascular ultrasound platform, built with powerful AI-based capabilities to help you transcend today's complexities and propel echocardiography into the next dimension. This uniquely modular platform means we keep advancing capabilities while giving you the ease you know and the legacy you trust. It's shared across EPIQ CVx/CVxi and Affiniti CVx cardiovascular systems.

A platform that transcends today's limitations



Transcend
unnecessary
variability with
**AI-enabled
consistency**



Transcend clinical
complexity with
**advanced
innovation**



Transcend tedious
tasks with
**efficient
automation**



Transcend system
challenges with
**flexible
scalability**

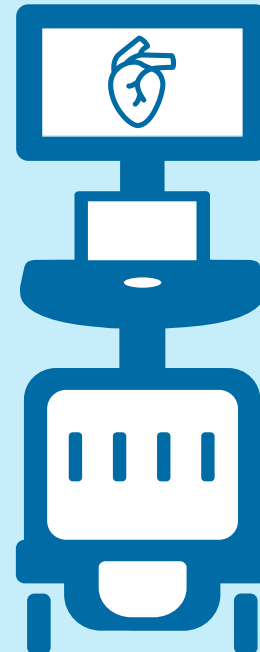
The CVx platform shares common DNA

One interface and one common set of controls across most Philips devices so that clinicians can feel confident working anywhere.



Affiniti CVx

- **AI-enabled consistency***
- **Ultrasound Workspace***
- **Powerful automation tools**
- **Advanced transducers**
- **CV-focused workflow**
- **Auto Measure capabilities***
- **2D/3D quantification**
- **Consistent user interface**
- **Collaboration Live multi-party****
- **Cross-fleet compatibility**

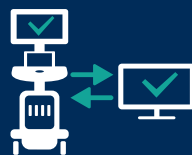


EPIQ CVx/CVxi

Break down barriers with devices and features that work together seamlessly



Consistent user interface
and familiar tools remove unnecessary complexity and facilitate adoption and training



Compatible diagnostic capabilities
on-cart and off-cart with multi-vendor Ultrasound Workspace



Collaboration Live with multi-party
enables real-time access to remote expertise**



Consistent operating system
for streamlined fleet management

*Clinical performance and safety have not been established for some features which have 510(k) pending. Not available for sale in the USA.

**Requires release 7.0.5 or higher. Diagnostic use and remote access via mobile device or browser requires release 9.0 or higher.

Multi-party and system-to-system connect require release 10.0 or higher.

1. Ultrasound Equipment World Market Report - 2023 Edition. Signify Research.

Talk with your Philips representative about what this innovative platform can do for you | www.philips.com/EPIQCVx

© 2024 Koninklijke Philips N.V. All rights are reserved.
Philips reserves the right to make changes in specifications and/or to discontinue any product at any time without notice or obligation and will not be liable for any consequences resulting from the use of this publication.



www.philips.com
Printed in the Netherlands.

4522 991 85511 * APR 2024