

**PHILIPS**

**capsule**

# Medical Device Integration

Unlock the value of your medical device data



# Philips Medical Device Integration

To meet the growing demand for comprehensive, high-fidelity, live-streaming data, hospitals and health systems need a strong and flexible information infrastructure. Philips' vendor-neutral medical device integration advances connectivity beyond the EMR, sharing data with various destination systems to power display, documentation, clinical surveillance, intelligent decision-making and research.

**Device connectivity can have many positive effects on clinical workflows, care delivery and, in turn, potentially improve outcomes:**

- For electronic medical record and clinical information systems, it can reduce manual data entry, inaccuracies and latency, to reduce the administrative burden on the clinical staff.
- For clinicians at a central station or in a virtual care environment (e.g., eICU), integrated devices can bring together and display data that provide a more complete view of the patient and support condition-specific oversight.
- For alarm and event management systems, integrated devices feed alarms and associated vital signs to provide context-rich notifications of emergent events to caregivers.
- For quality improvement efforts, data provided by integrated devices can be useful in identifying patterns and trends that can inform research to potentially improve care delivery.

All these systems can be fed simultaneously from the Philips Medical Device Integration solution.

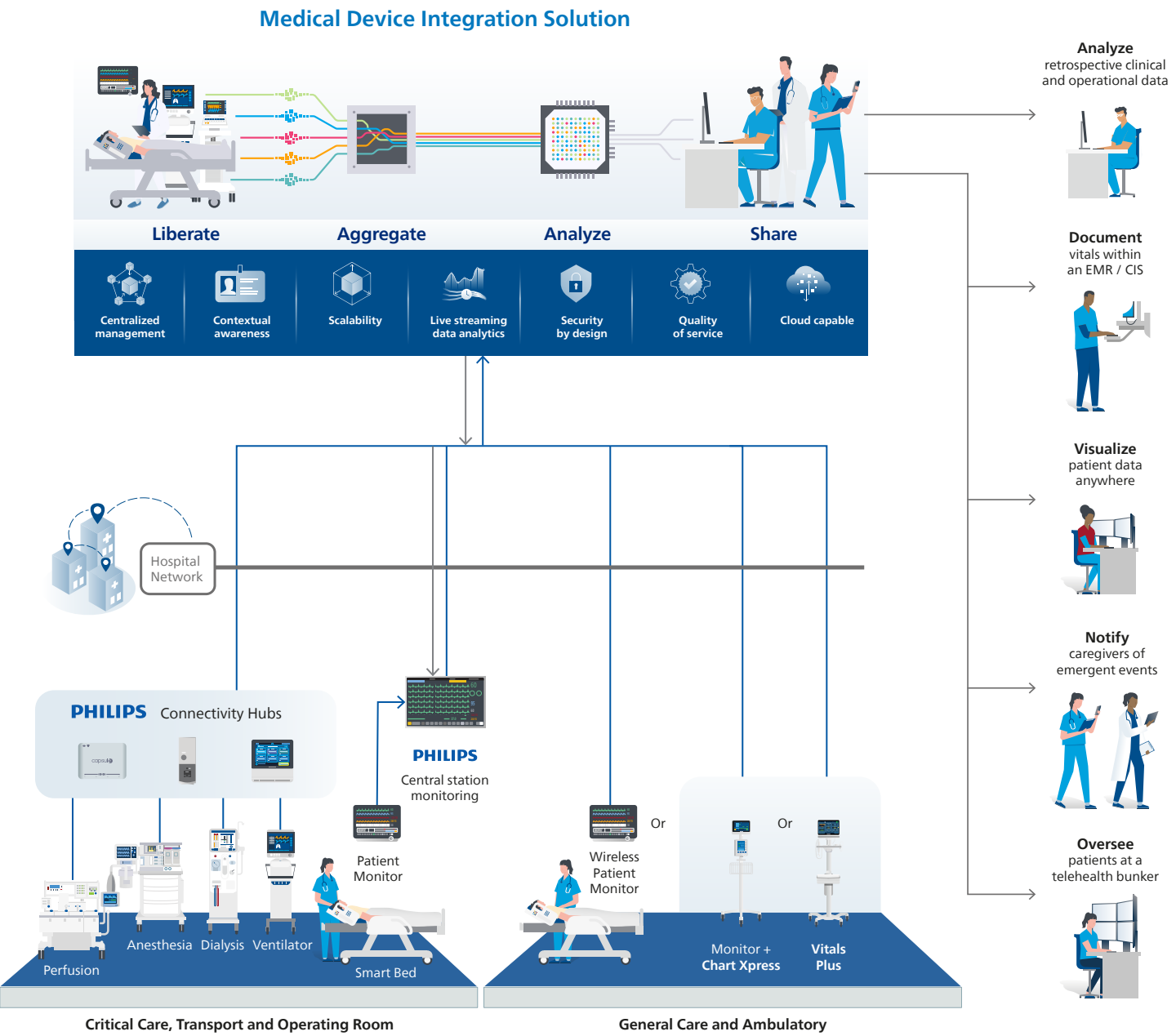
## Key advantages

- Captures all live-streaming data (vitals, alarms, and waveforms) and formats, standardizes, and curates it to support the needs of specific applications and systems
- Encrypts data at rest and in-transit for end-to-end security
- Provides associations and authentication between medical devices and the patient
- Investment in a Philips ecosystem means Philips-to-Philips devices and applications connect at no additional cost



# Harnessing the power of your clinical data

The Philips Medical Device Integration (MDI) solution is a suite of products and services designed to eliminate obstacles such as device-specific connectivity protocols, security challenges across the organization, and slow adoption of industry-wide, standards-based interoperability. This all helps to simplify complex workflows by making real-time medical data available to destination systems for documenting, reporting, analyzing and, ultimately, making critical decisions.





# Our building block approach provides a tailored solution

- Which data do you want to capture
- What do you want to do with the data
- Where do you want to see the data

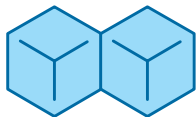


## Investing with confidence for actionable insights

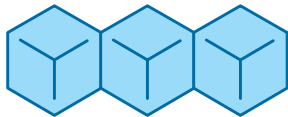
Philips Medical Device Integration solution is deployed in more than 3,000 healthcare facilities across nearly fifty countries, supporting healthcare providers in leveraging their medical device data. Our solutions are flexible, scalable and secure, with a focus on improving data reliability. We provide solutions tailored to support a Philips ecosystem and/or a vendor-neutral device connectivity environment which can feature a broad range of device types, manufacturers, models and software versions for more than 1,000 devices and 100+ downstream clinical systems



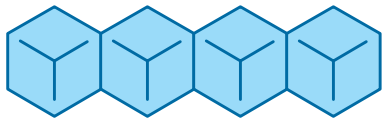
**Connectivity hubs** provide physical connectivity and computing power at the point of care and across the continuum of care. Multiple medical device data output types are supported, including serial, USB, network, and even gateway.



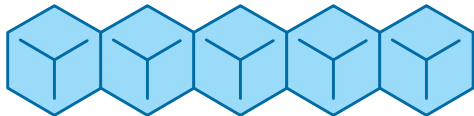
**Device driver interfaces** are the software components that enable communication between the MDI solution and medical devices to collect all data exported and make it available to other components of the data management platform.



**Data management** provides the foundational software which liberates, organizes, and protects live-streaming medical data and makes it available to various destination systems to facilitate critical decisions for patient care.



**Implementation services** bring in Philips’ clinical, technical, and project management expertise from the initial on-site assessment to deployment, giving you confidence in a successful and on time go-live.



**Maintenance and support** provides access to our ever expanding device driver library, new product releases and enhancements, bug fixes and 24/7 support to troubleshoot and resolve issues.

1000+  
devices supported\*

100+  
clinical systems\*

3000+  
facilities worldwide\*

IHE  
HL7 integration

100+ device  
manufacturer  
partnerships\*

RTM Rosetta  
Terminology  
Mapping

# Plug-and-play connectivity hardware

**Neuron**  
An integrated platform for any care environment, connecting up to nine medical devices. Ideal for bedside patient identification and association plus rapid user authentication.



**Axon**  
A robust and cost-effective serial-to-network bridge with x1, x4 or x8 serial port options and low profile, ideal for crowded environments like the OR and ICU.

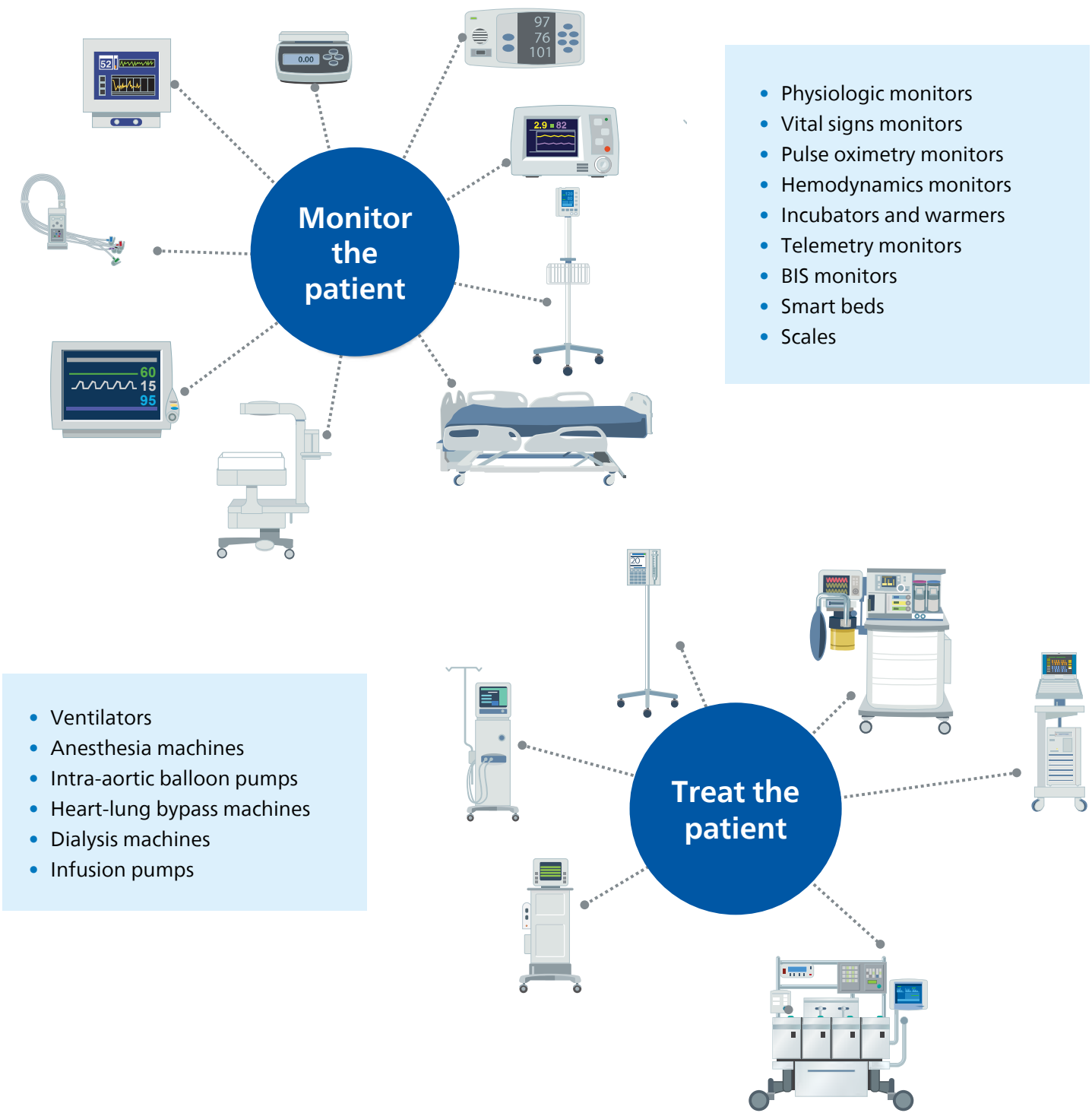
**EC10**  
Collects data to be displayed on Philips patient monitors which can then be forwarded to central monitoring.



# Versatile data management software

**Medical Device Information Platform (MDIP)** offers a comprehensive and scalable, vendor-neutral solution for device integration and provides the tools and processes to identify, associate and disassociate the patient.

**IntelliBridge Enterprise (IBE)** is a centralized, HL7 messaging service to interface Philips solutions with your hospital's clinical information systems or EHRs and includes the necessary communication protocols, mapping and message delivery, as well as data filtering, transformation, and routing.



# Partnering with you to unlock the value of medical device data

- **Improves patient monitoring** where clinicians can access a more complete picture of a patient's health by having all the medical device data available and shared, with the goal of helping to improve diagnosis and treatment decisions
- **Increases efficiency** by reducing the need for manual data entry, reducing the risk of transcription errors and missing information given the device data is automatically captured and collected
- **Supports remote monitoring** with connected devices' information to keep track of patient conditions inside (and outside) of the hospital, which could help clinicians prevent hospitalization or readmissions
- **Drives clinical advanced analytics** to identify patterns and trends that can inform research, potentially improve care quality, and support population health management due to the large amounts of collected medical device data which can be analyzed
- **Reduces costs** by helping clinicians diagnose and treat patients, reducing unnecessary tests and procedures

**For more information, contact us**

**North America**  
+1 800-260-9537  
[support@capsuletech.com](mailto:support@capsuletech.com)

**International Offices**  
+33 1 84 17 12 50  
[international@capsuletech.com](mailto:international@capsuletech.com)

