

PHILIPS

*Digital***Diagnost 4.x**

Upgrade and benefit program



Philips Diagnostic X-ray
upgrade and benefit program

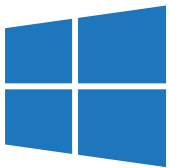
DigitalDiagnost 4.x

The sustainability upgrade¹

Philips Diagnostic X-ray is committed to helping you provide an excellent level of data security to your patients. The sustainability upgrade to Windows 10 offers state-of-the-art protection against vulnerabilities, including protection of patient data as well as system security across departments – keeping your systems safe and secure. Your installed DigitalDiagnost 4.x systems will benefit from this sustainability upgrade package that includes Windows 10 operating system, new PC hardware and several new Eleva features to ease your workflow and improve serviceability of your systems.

Highlights of the package

Improved security



Windows 10

Windows 10 operating system

- Windows 10 1607 LTSB enterprise edition
- Security patches support from Microsoft until 2026
- Secure and safe system
- Improved patient data security

Excellent images



UNIQUE 2 image processing

- Latest generation of image processing
- Reduced noise and artifacts
- Consistent image impression
- Harmonized contrast
- Enhanced details

Easier workflow



Latest Eleva software

- Harddisk drive encryption
- Centralized user management
- Remote software distribution and installation
- Target and deviation index
- Bone Suppression² (optional)

Upgraded hardware



Latest hardware

- Improved PC hardware with 480 GB SSD Harddisk (~ 25.000 images) and 16 GB RAM
- SkyPlate E (optional)
- 2 MP high resolution monitor (optional)

Evolve your DigitalDiagnost Rel. 4.0/ 4.1/4.2 to DigitalDiagnost Rel. 4.3 with the sustainability upgrade

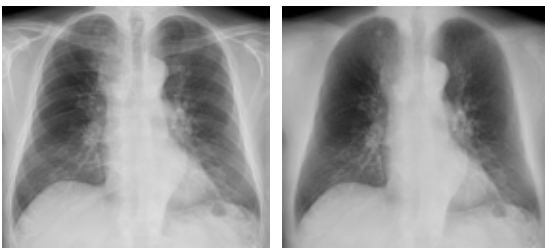
Benefit	Product Features	Windows 7 DigitalDiagnost Rel. 4.0/4.1/4.2	Windows 10 DigitalDiagnost Rel. 4.3
Operating System	Windows and Eleva	Windows 7 and older version of Eleva	Windows 10 and latest Eleva with IT security improvements
Dose Control	Target and Deviation Index	X	✓
Image Quality	Image Processing	UNIQUE	UNIQUE 2 (Reduced noise, harmonized contrast, enhanced details)
Advanced Applications	Bone Suppression	X	✓ (optional)
Hardware	PC (Eleva Workspot)	500 GB SATA (HDD) in total (200 GB typically used for 4.000 images), 8 GB RAM	480 GB Solid State Drive (SSD) in total (~ 25.000 images), 16GB RAM
	Monitor	19", 1.280 x 1.024 pixels, 500:1 contrast	21.3", 1.600 x 1.200 pixels, 800:1 contrast (optional)
	Compatible Detectors	SkyPlate (optional)	SkyPlate and SkyPlate E (optional)

The chest package

The chest optimization package is designed to give you a superb chest imaging and diagnosis support on your new or already installed DigitalDiagnost 4.x. The package includes our innovative software solutions Bone Suppression and SkyFlow Plus. Benefit from an unobstructed view on chest radiographs for faster and more precise diagnosis as well as faster workflow with our grid-less technology SkyFlow Plus.

Highlights of the package

Bringing sight to the invisible



Bone Suppression

Innovative image enhancement technology designed to increase the clarity of chest radiographs by suppressing bones on digital chest images

- More confident image interpretation
- Enables detection of 1 in 6 nodules previously missed
- Fully integrated into the Eleva workflow
- Images automatically added to patient files

Grid-less imaging



SkyFlow Plus

Grid-less workflow

- Improves image contrast
- Saves an average of 34 seconds per chest exam versus grid workflow³
- Allows for fewer retakes caused by grid misalignment
- Supports X-ray dose management
- Is fully automatic, patient adaptive, and works without special attention

Enhance your DR workflow with our classic SkyPlates or the SkyPlate E

Improve your DR workflow with a wireless portable X-ray detector to allow easy, comfortable positioning especially for difficult anatomical views. Philips SkyPlates are configured to fit to your facility's individual performance needs.



SkyPlate – the royalty of the family

Large: 35 cm x 43 cm (approx. 14" x 17")
Small: 24 cm x 30 cm (approx. 10" x 12")



SkyPlate E – the workhorse of the family

Large: 35 cm x 43 cm (approx. 14" x 17")

Main benefits at a glance

- High quality imaging
- Easy positioning
- Flexible performance
- Smooth grid-less workflow

The pediatric package

The pediatric package is designed to give you enhanced pediatric functionality on your already installed systems. It allows you to better control pediatric dose and improve your processes when examining children. To reduce stress and to help children feel less intimidated, Philips recommends adding the optional Ambient Experience to the package.

Highlights of the package

Grid-less imaging



SkyFlow Plus

- Grid-less workflow
- Improves image contrast
- Saves an average of 34 seconds per chest exam vs. grid workflow³
- Allows for fewer retakes caused by grid misalignment
- Supports X-ray dose management
- Is fully automatic, patient adaptive, and works without special attention

Easy pediatric workflow



Small SkyPlate detector

- Detector size 24 cm x 30 cm (approx. 10" x 12")
- Lightweight detector for convenient pediatric imaging
- CsI detector allowing excellent DR images

Smart dose control



Clinical QC

- Easy and convenient monitoring of departmental quality standards
- Dose documentation per image and examination
- Reject analysis

Increase your patient experience with **Ambient Experience**

Create an engaging, multi-sensorial radiography imaging environment that promotes a sense of well-being



A room equipped with
Philips Ambient Experience
can increase patient
satisfaction by up to **45%**⁴

¹ Regulatory approval for CE-related regions is expected in Q4/2020. Other countries will follow. Please contact your local Q&R representative for details.

² ClearRead Bone Suppression by Riverain Technologies

³ Based on 4 images on average per examination. Validated by clinicians in a Philips' development environment.

⁴ Compared to a room not equipped with Philips Ambient Experience. Result based on case study "Patient-friendly environment, Philips Ambient Experience puts X-ray examinations in a completely new light, 4522 962 86928 * Oct 2012

