

PHILIPS

DigitalDiagnost C90

Upgrade and benefit program



Philips Diagnostic X-ray
upgrade and benefit program

DigitalDiagnost C90

The pediatric package

The pediatric package is designed to give you an exceptional pediatric functionality on your new or already installed DigitalDiagnost C90. It allows you to control your pediatric dose and to help to improve your processes when examining children. The package includes Philips' innovative live camera package, the small SkyPlate detector, SkyFlow Plus and the Clinical QC package. To help to reduce stress and to help children feel less intimidated, Philips recommends adding the optional Ambient Experience to the package.

Highlights of the package

Precise collimation



Live Camera Package

Detect patient movement and incorrect collimation early with

- Bird's eye view
- Live images at the
 - Eleva Tube Head
 - Eleva workspot

Grid-less imaging



SkyFlow Plus

A grid-less workflow with SkyFlow Plus

- Improves image contrast
- Saves an average of 34 seconds per chest exam vs. grid workflow¹
- Allows for fewer retakes caused by grid misalignment
- Supports X-ray dose management
- Fully automatic, patient adaptive, works without special attention

Easy pediatric workflow



Small SkyPlate detector

Small SkyPlate supports ergonomic procedures when doing shoulder, skull and extremity views

- Detector size 24 cm x 30 cm (approx. 10" x 12")
- Lightweight detector for convenient pediatric imaging

Package components

- Live Camera package
- Small SkyPlate detector
- SkyFlow Plus
- Clinical QC²

Increase your patient experience with Ambient Experience

Create an engaging, multi-sensorial radiography imaging environment that promotes a sense of well-being



Main benefits at a glance

- Reduced patient stress
- Improved patient and staff experience and satisfaction
- Supports clinical workflow
- Differentiates the hospital

¹ Based on 4 images on average per examination. Validated by clinicians in a Philips' development environment

² Statistical analysis tool for reportings, internal quality control and workflow improvements

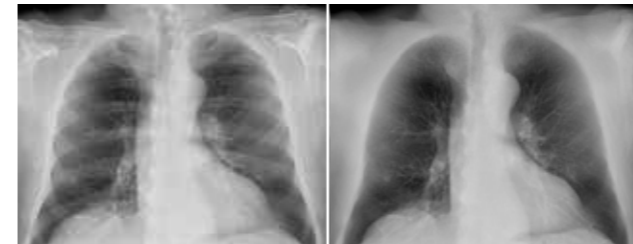
³ SkyPlate E is not available in North America

The chest package

The chest optimization package is designed to give you an superb chest imaging and diagnosis support on your new or already installed DigitalDiagnost C90. The package includes our innovative software solutions Bone Suppression and SkyFlow Plus. Benefit from an unobstructed view on chest radiographs for faster and more precise diagnosis as well as faster workflow with our grid-less technology SkyFlow Plus.

Highlights of the package

Bringing sight to the invisible



Bone Suppression

Innovative image enhancement technology designed to increase the clarity of adult erect chest radiographs by suppressing bones on digital images

- More confident image interpretation
- Enables detection of 1 in 6 nodules previously missed
- Fully integrated into the Eleva workflow
- Images automatically added to patient files

Grid-less imaging



SkyFlow Plus

A grid-less workflow with SkyFlow Plus

- Improves image contrast
- Saves an average of 34 seconds per chest exam vs. grid workflow¹
- Allows for fewer retakes caused by grid misalignment
- Supports X-ray dose management
- Fully automatic, patient adaptive, works without special attention

Package components

- Bone Suppression
- SkyFlow Plus

Enhance your DR workflow with our classic SkyPlate's or the SkyPlate E³

Enhance your DR workflow with a wireless portable X-ray detector to allow easy, comfortable positioning especially for difficult anatomical views. Philips SkyPlates are configured to fit to your facility's individual performance needs.



SkyPlate – the royalty of the family

Large: 35 cm x 43 cm (approx. 14" x 17")
Small: 24 cm x 30 cm (approx. 10" x 12")



SkyPlate E – the workhorse of the family

Large: 35 cm x 43 cm (approx. 14" x 17")

Main benefits at a glance

- High quality imaging
- Easy positioning
- Flexible performance
- Smooth gridless workflow



© 2020 Koninklijke Philips N.V. All rights reserved. Specifications are subject to change without notice. Trademarks are the property of Koninklijke Philips N.V. or their respective owners.

4522 991 57931 * MAY 2020

How to reach us
Please visit www.philips.com
healthcare@philips.com