

Ambient Experience **for CT**



Stressed patients are less likely to comply, which may negatively affect the image quality, that can lead to longer exam times. Active relaxation and positive distraction techniques create a welcoming, relaxing multi-sensorial imaging environment.

Patients can select the room theme and staff can easily provide breath-hold guidance.

Scope of Delivery

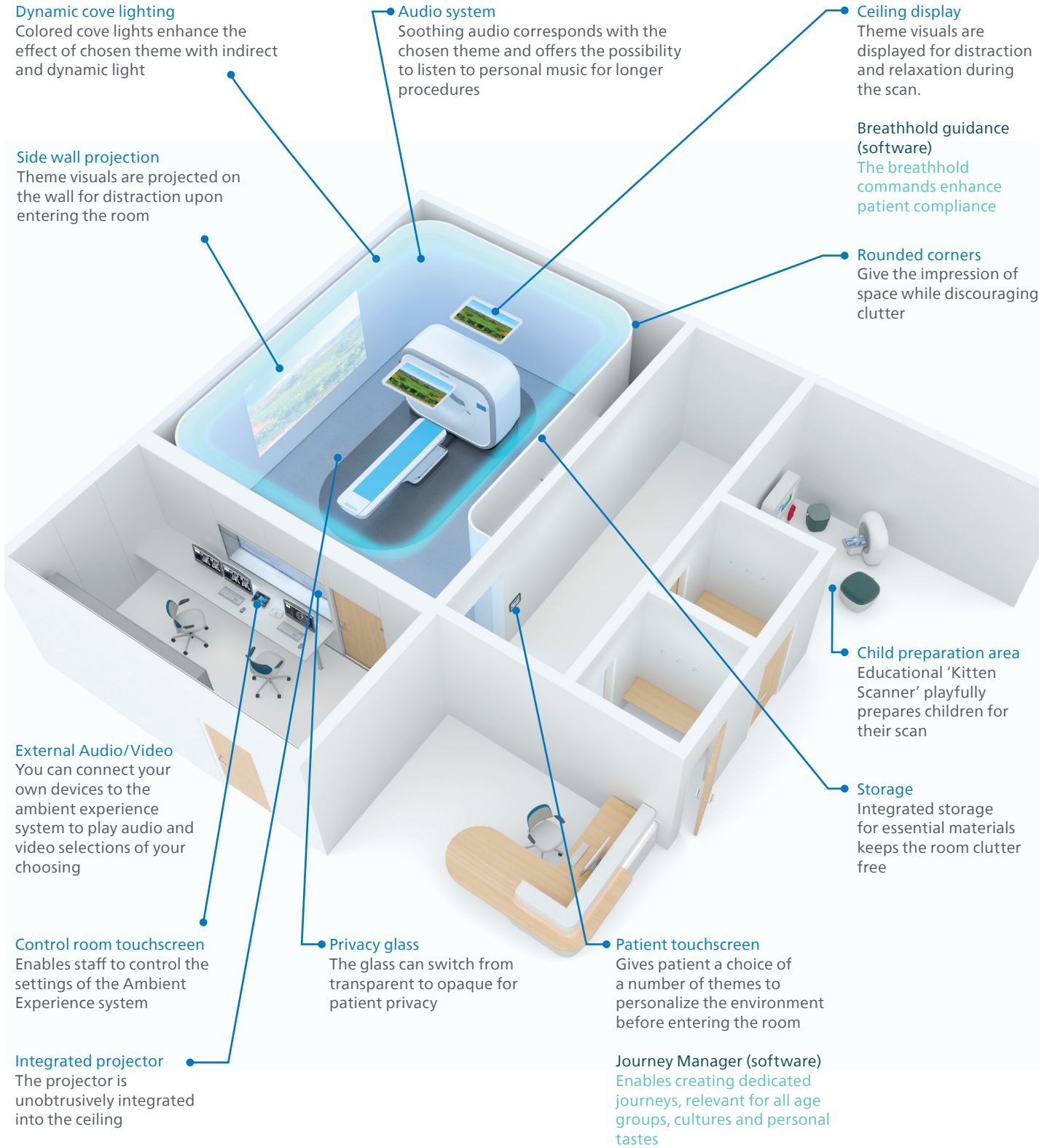
- Templated room design**
Design recommendations to reduce clutter and improve workflow incorporated in site plans, such as floor island, rounded corners, integrated cabinets.
- Project Management**
Supervision by Philips project manager. Coordination of communication with contractor and/or architect, resources and implementation.
- Control system and software**
Necessary hardware, cabling, and software to control the Ambient Experience components.
- External audio/video**
HDMI input for connection of personal devices such as phone or tablet.
- Audio system**
Ceiling speakers and cabling for connection to the control system.
- Standard themes**
Variety of 31 standard themes help patients feel engaged and provide them with positive distraction and a feeling of control. The room's dynamic gradient lighting, audio, and video render the theme to create a welcome ambiance.

- Journey Manager**
The Journey Manager enables creating dedicated journeys from the various Ambient Experience themes, addressing various aged populations, gender and different cultures.
- Touchscreen**
The touchscreen provides an easy way for the themes to control all components of the system. It provides settings for theme and color selection, as well as system control functionality.
- Dynamic gradient lighting**
Dynamic LED light system for indirect cove light, controlled by selected theme or selected color.
- Side wall projection**
Optically short-throw in-ceiling-mounted projector is minimally visible during the operation. Including mounting brackets and cabling.
- Ceiling display**
Two large displays unobtrusively integrated in the ceiling. The Ambient Experience video content can be played head first or feet first depending on the procedure setting.
- Breathhold guidance**
The manual breathhold commands that are given during the CT-scan, are visualized on the displays in the scanner room and assist with the patient's respiratory cycle.

Accessories and Options

- Privacy glass control**
The privacy glass interface enables changing of the privacy glass with a simple touch on the touchscreen.
- Premium themes**
Via the Philips Service Manager any additional theme can be added to the standard themes. 14 premium themes can be added to the Ambient Experience themes library.

- Kitten Scanner**
Interactive instructional tool for children to prepare them for their scanning procedure, including set of toys.
- Wireless access**
Enables tablet to control the Ambient Experience system as a 2nd touchscreen.



Ambient Experience **for Interventional Suite**



Patients worried about their outcome are most stressed prior to the procedure and busy staff have less time to comfort. Ambient Experience provides self-selected lighting, audio, and theme settings help to calm the patient during procedure preparation, during the procedure, and in post-procedure recovery.

Scope of Delivery

Templated room design

Design recommendations to reduce clutter and improve workflow incorporated in site plans, such as floor island, rounded corners, integrated cabinets.

Project Management

Supervision by Philips project manager. Coordination of communication with contractor and/or architect, resources and implementation.

Control system and software

Necessary hardware and cabling for installation. Software to control the Ambient Experience components such as volume, light intensity and color.

External audio/video

HDMI input for connection of personal devices such as phone or tablet.

Audio system

Two ceiling speakers and cabling for connection to the AE control system.

Standard themes

A variety of 31 standard themes help patients feel engaged and provide them with positive distraction and a feeling of control. The room's dynamic gradient lighting, audio, and video render the theme.

Journey Manager

The Journey Manager enables creating dedicated journeys from the various Ambient Experience themes, addressing various aged populations, gender and different cultures.

Touchscreen

The touchscreen provides an easy way for the themes to control all components of the system. It provides settings for theme and color selection, as well as system control functionality.

Ceiling theme elements

Large displays unobstrusively integrated in the ceiling on which theme visuals are displayed. These displays provide distraction for the patient during preparation phase and relaxation during the scan.

Dynamic gradient lighting

Dynamic LED light system for indirect cove light, controlled by selected theme or selected color.

Cove design as a service

Cove design is included in the offering to design the best suitable option for a closed hygiene cove in new to build or existing rooms.

Azurion FlexVision

Integrated with Ambient Experience displays the visual themes in sync with room lighting and audio

Accessories and Options

Privacy glass control

The privacy glass interface enables changing of the privacy glass with a simple touch on the touchscreen.

Premium themes

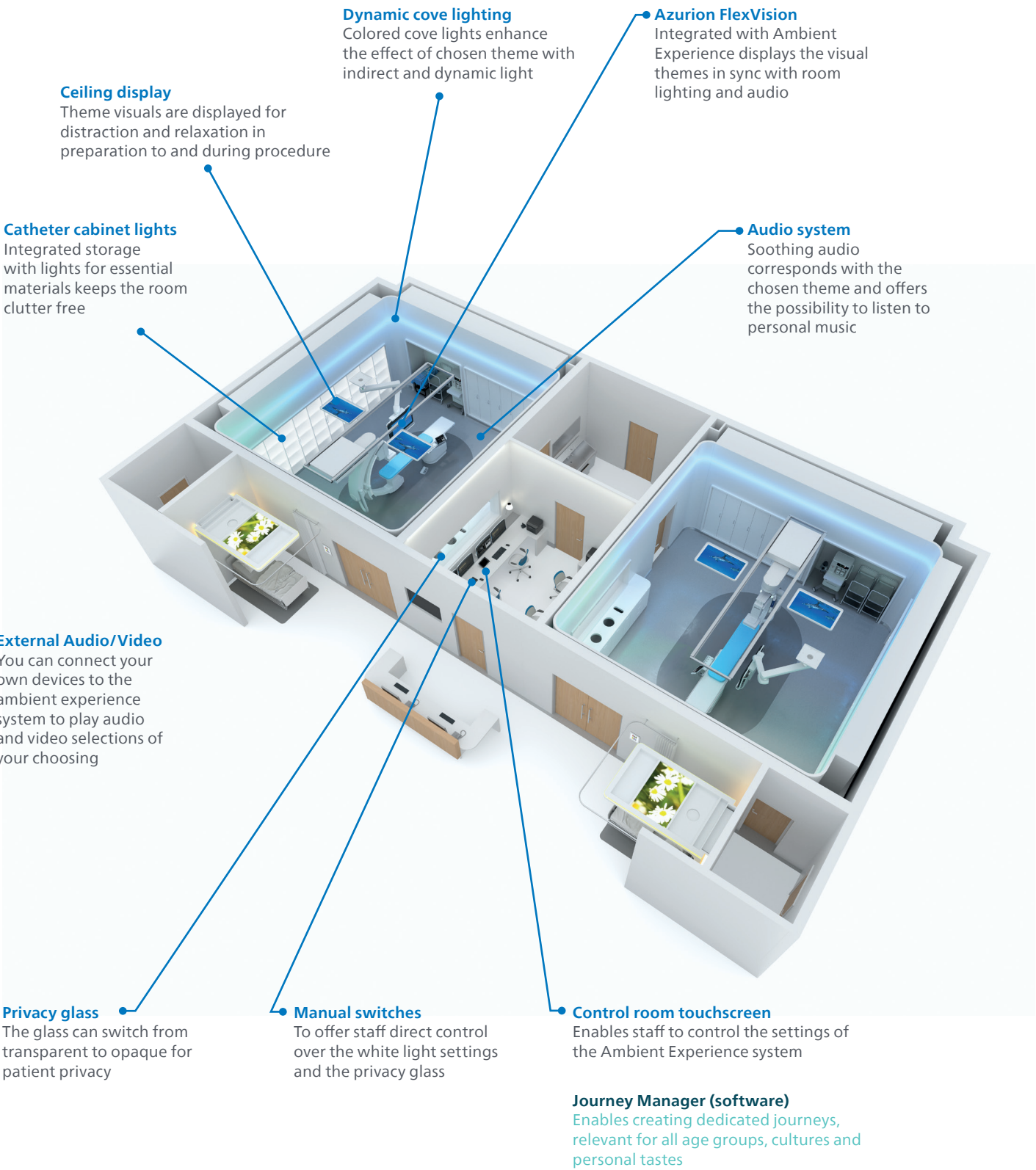
Via the Philips Service Manager any additional theme can be added to the standard themes. 14 premium themes can be added to the Ambient Experience themes library.

Catheter cabinet lights

Integrated storage with lights for essential materials keeps the room clutter free.

Wireless access

Enables tablet to control the Ambient Experience system as a second touchscreen.



Ambient Experience for MR



Anxious, claustrophobic, non-compliant patients lead to more retakes, longer procedures, and unnecessary sedation. Calming themes relax the patient prior to and during the exam. In-bore audio and visuals help them to remain calm and compliant.

Scope of Delivery

Templated room design

Design recommendations to reduce clutter and improve workflow incorporated in site plans, such as floor island, rounded corners, integrated coil cabinets.

Project Management

Supervision by Philips project manager. Coordination of communication with contractor and/or architect, resources and implementation.

Control system and software

Necessary hardware, cabling, and software to control the Ambient Experience components.

External audio/video

HDMI input for connection of personal devices such as phone or tablet.

Audio system

Cabling to connect the Ambient Experience system to the audio system with ceiling speakers and headphones of the MR system.

Standard themes

A variety of 31 standard themes help patients feel engaged and provide them with positive distraction and a feeling of control. The room's dynamic gradient lighting, audio, and video render the theme.

Journey Manager

The Journey Manager enables creating dedicated journeys from the various Ambient Experience themes, addressing various aged populations, gender and different cultures.

Touchscreen

The touchscreen provides an easy way to control all components of the system. The contemporary user interface enables an intuitive theme and journey selection, as well as system control functionality. System consists of one wall mounted and 1 desk mounted touchscreen.

Dynamic gradient lighting

MR compatible, 'wall-washing', dynamic LED spotlight system, controlled by selected theme, color or preset.

Wall projection

MR compatible video projector in a RF shielded projector housing.

Ceiling Lighting Element (Halo)

MR compatible dynamic colored LED lighting element. Specially designed and constructed molded light diffuser. Includes: power supply, cabling and ceiling tiles.

In-bore Connect

In-bore Connect helps improve the patient experience during the scan by providing step-by-step guidance information and positive distraction. Synced with the Philips MRI, it provides scan progress and breath-hold information during the scan to support patient compliance.

The MRI compatible exam room display accommodates flexible room design options with the RF cage.

Storage

Coil cabinet for storing medical equipment out of sight of the patient. The cart port provides storage for another 5 RF coils as well as a parking space for any MR accessory cart up to 140 cm (55 inch).

Pediatric Coaching solution

Successfully scan the vulnerable group of 4+, using as few sedatives as possible, by preparing and guiding children for their MRI scan at home, in the hospital, and during the procedure.

Wireless access

Enables tablet to control the Ambient Experience system as a second touchscreen.

Accessories and Options

Privacy glass control

The privacy glass interface enables changing of the privacy glass with a simple touch on the touchscreen.

Premium themes

Via the Philips Service Manager any additional theme can be added to the standard themes. 14 premium themes can be added to the Ambient Experience themes library.

Halo

Diffused dynamic colored lighting enhances the atmosphere with a light scenario coupled to the chosen theme

Dynamic Lighting

Colored LED spot lights enhance the effect of chosen theme through dynamic colored light

In-bore Connect

Designed to help patients relax and hold still during the MRI examination

In-bore Connect (software)

Is linked in real-time with the Philips MR scanning software providing patient guidance
MRI compatible 55" exam room display operates within RF cage

Side wall projection

Theme visuals are projected on the wall for distraction upon entering the room

Audio system

Soothing audio corresponds with the chosen theme and offers the possibility to listen to personal music for longer procedures

Coil cabinet

Integrated coil cabinet complements overall room design and enhances workflow

Rounded corners

Give the impression of space while discouraging clutter

Control room touchscreen

Enables staff to control the settings of the Ambient Experience system

Integrated projector

The RF shielded projector is unobtrusively integrated into the ceiling

Patient touchscreen

Gives patient a choice of a number of themes to personalize the environment before entering the room

Journey Manager (software)

Enables creating dedicated journeys, relevant for all age groups, cultures and personal tastes

External Audio/Video

You can connect your own devices to the ambient experience system to play audio and video selections of your choosing

Child preparation area

Educational 'Kitten Scanner' playfully prepares children for their scan

Ambient Experience for Radiography



Demanding schedules may be slowed by anxious, non-compliant patients.

Philips Ambient Experience provides a welcoming environment that is achieved with lighting and audio. Even for the short exam duration, these elements of positive distraction can help relax the patient enough to increase compliance with staff instructions.

Scope of Delivery

Templated room design
Design recommendations to reduce clutter and improve workflow incorporated in site plans, such as floor island, rounded corners, integrated cabinets.

Project Management
Supervision by Philips project manager. Coordination of communication with contractor and/or architect, resources and implementation.

Control system and software
Necessary hardware and cabling for installation. Software to control the Ambient Experience components such as volume, light intensity and color.

External audio/video
HDMI input for connection of personal devices such as phone or tablet.

Audio system
Two ceiling speakers and cabling for connection to the AE control system.

Standard themes
A variety of 31 standard themes help patients feel engaged and provide them with positive distraction and a feeling of control. The room's dynamic gradient lighting, audio, and video render the theme.

Journey Manager
The Journey Manager enables creating dedicated journeys from the various Ambient Experience themes, addressing various aged populations, gender and different cultures.

Touchscreen
The touchscreen provides an easy way for the themes to control all components of the system. It provides tabs for theme and color selection, as well as system control functionality.

Dynamic gradient lighting
Dynamic LED light system for indirect cove light, controlled by selected theme or selected color.

Side wall projection
Optically short-throw video projector. Including mounting brackets and cabling.

Ceiling display
Large ceiling display unobtrusively integrated in the ceiling. The Ambient Experience video content can be played head first or feet first depending on the procedure setting.

Accessories and Options

Privacy glass control
The privacy glass interface enables changing of the privacy glass with a simple touch on the touchscreen.

Premium themes
Via the Philips Service Manager any additional theme can be added to the standard themes. 14 premium themes can be added to the Ambient Experience themes library.

Wireless access
Enables tablet to control the Ambient Experience system as a second touchscreen.

