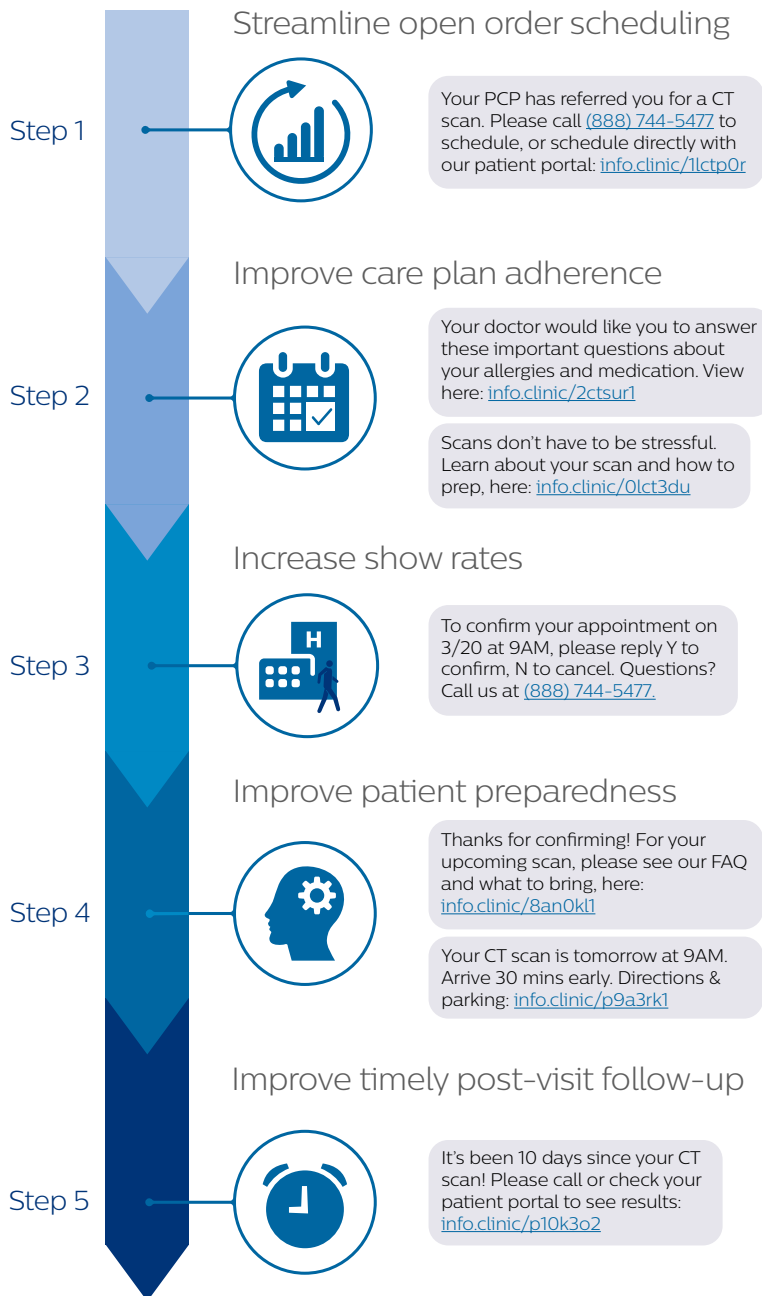




The radiology patient pathway with **Patient Engagement Manager**

Patient Engagement Manager (PEM) serves as the communication hub for radiology clinics by delivering precisely timed and automated appointment reminders, instructions, and educational modules to patients across all diagnostic imaging modalities. PEM's flexible platform adapts to appointment and patient-specific attributes to deliver tailored content via text messages, emails, and voice calls that are designed to navigate each patient through their unique care journey.

Engage and prepare patients the right way



With Patient Engagement

Manager, engage patients for all imaging modalities with dynamic, scan-specific pathways.

Alex is a 52-year-old diabetic patient who is scheduled for a CT scan with contrast. Alex had an allergic reaction to IV contrast in the past and it's important that the radiology clinic knows about their allergy and provides tailored instructions. With PEM, Alex and the radiology clinic can feel at ease knowing that PEM has delivered personalized instructions to fit Alex's needs.

Check out these sample messages from Alex's CT scan. Visit us at philips.com/pem to learn more.



philips.com/pem
support@medumo.com