

# PHILIPS

## Ultrasound

### Vascular



## Definitive diagnosis through efficient workflows and breakthrough innovations

### Philips vascular ultrasound

With revolutionary imaging formats and complementary clinical tools, our solutions help clinicians efficiently assess and monitor vascular disease, enabling delivery of exceptional patient care.

“I personally envision the new XL14-3 as the most powerful vascular imaging tool since the invention of color Doppler imaging in the early 80’s. Every imaging application it offers provides new benefits in a way that I have never seen before. Live xPlane, iSlice, 3D/4D acquisitions, 3D Pano and, of course my favorite, ‘Vessel Cast’ quickly gaining strength and confidence in providing more accurate and reproducible findings that dramatically raise confidence in disease diagnosis and management.”\*

Muhammad Hasan, MBBCH, RPVI, RVT, RDCS, RDMS  
Miami Cardiac & Vascular Institute, Baptist Health South Florida

\* Customer experience. Results may vary.



Philips offers a complete portfolio of transducers optimized for vascular imaging



### 68% less repetitive

button pushes with Auto Doppler\*\*



### 15% time savings

on EPIQ versus iU22 for LE exams (a reduction of 1.8 minutes, on average, per exam)<sup>†</sup>



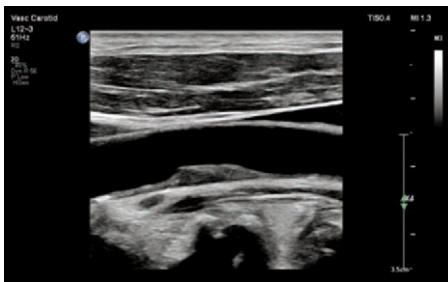
### 1-click acquisition

Icon-based 3D workflow, simplifying acquisition and manipulation<sup>††</sup>

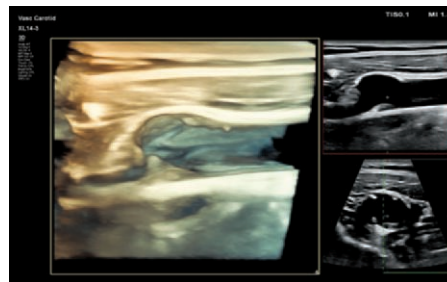
\*\* Auto Doppler Clinical Study, Dec. 2011.

<sup>†</sup> Philips internal timing study.

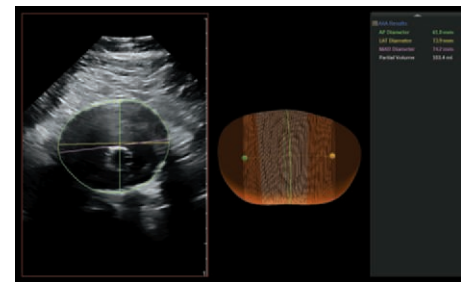
<sup>††</sup> External user study on EPIQ Elite based on 27 respondents. Study report available upon request.



L12-3 Ergo transducer provides superb core vascular imaging performance.



XL14-3 transducer has ability to visualize anatomy in 3D/4D, allowing clinicians to see directly into vessel to evaluate plaque's spatial location and composition.



AAA Model provides key measurements necessary for surveillance of native and post-EVAR AAAs.

#### L12-3 Ergo transducer

- **Ergonomic design** enables ease of use and better grip during procedures.
- **MicroFlow Imaging** is designed to detect slow and weak blood flow anatomy in tissue with remarkable sensitivity and enhances the resolution of flow in vascular exams. With high resolution and minimal artifacts, clinicians can visualize and characterize subtle flow disturbances around stenotic plaque to make confident diagnoses.
- **XRES Pro** provides superb delineation of vessel interfaces and enhanced plaque texture conspicuity, elevating diagnostic confidence during vascular imaging.

#### XL14-3 xMATRIX transducer

- **96%** of users surveyed preferred to use the XL14-3 to assess vulnerable plaque\*
- **70%** of users believe that using Live xPlane imaging could reduce carotid exam time by 20%\*
- **93%** of users feel that Live xPlane Doppler could reduce sample volume placement errors and provide greater reproducibility and consistency\*
- **85%** of users believe that 3D/4D assessment will influence clinical decisions and enhance patient consultation\*
- **78%** of users believe visualizing vessel cast using 3D/4D flow data will assist in providing direct assessment of stenotic or tortuous conditions\*

#### Abdominal Aortic Aneurysm (AAA) Model

- **Segment and quantify** 3D ultrasound data for surveillance of native and post-EVAR AAAs
  - Interoperator reproducibility superior to that of 2D ultrasound
  - 3D ultrasound correlates significantly better to 3D CT than the currently used 2D ultrasound method when assessing maximum diameter of the residual sac after EVAR<sup>1</sup>

## Why do more sonographers, radiologists and vascular surgeons choose Philips?

#### Easier

- **Features such as AAA Model and Auto Doppler** help simplify end-to-end workflows for the user
- **Superb image quality** eases the overall scanning process to arrive at a definitive diagnosis for the user

#### Faster

- **Workflow solutions** that reduce steps and improve efficiency
  - Auto Doppler
  - Icon-driven workflow (AutoVues)
  - SmartExam protocols
  - Live xPlane imaging

#### Anywhere with confidence

- **Exceptional image quality** for definitive diagnoses regardless of the clinical setting
- **Philips Collaboration Live** lets users quickly and securely talk, text, screen share and video stream directly from the ultrasound system to wherever you are, allowing you to extend your team without expanding it\*\*

## Winner! 2020 IMV ServiceTrak™ Imaging Awards

Best of General Ultrasound • Best Service • Best System Performance



Learn more at

[www.philips.com/vascularultrasound](http://www.philips.com/vascularultrasound)

Contact your Philips account manager or call 1-800-229-6417.

\* External user study on EPIQ Elite based on 27 respondents. Study report available upon request.

\*\* Contract required. For use with Philips Affiniti or EPIQ ultrasound systems release 6.0 or higher. Collaboration Live is designed to enable clinical collaboration and consultation. The tool is not intended for remote diagnostic use.

1. Bredahl K, et al. Three-dimensional Ultrasound Improves the Accuracy of Diameter Measurement of the Residual Sac in EVAR Patients. Eur J Vasc Endovasc Surg. 2013 Nov;46(5):525-32.

