



**PHILIPS**

Ultrasound

Lumify

The ultrasound you trust.  
The advances that matter.

**Philips Lumify ultrasound on Android**

# Exceptional ultrasound imaging

Lumify handheld ultrasound offers images that enhance diagnostic confidence, along with superb reliability and high-quality, lightweight transducers that stay cool even with extended scanning.

**The  
choice  
is yours**

Lumify is now compatible  
with more than  
40 different devices.

## **Your data, your way**

With Lumify, your data and images stay with you and are stored however you choose. Lumify is HIPAA-compliant and is in use in hospitals worldwide.

# Fast diagnosis and treatment

Our app-based ultrasound makes it easy to get started – three simple steps, and you're ready to go.

- **1 Download**  
the Lumify app  
to your compatible  
smart device.\*
- **2 Connect**  
the Lumify transducer  
to your smart device.
- **3 Scan**  
with the exceptional  
quality of Philips  
imaging technology.

## Meet today's point-of-care imaging challenges

### Let nothing get in the way of clinical performance

Crystal-clear diagnostic insights depend on high-resolution imaging performance across shallow and deeper applications.

That's the exceptional imaging performance you can expect from Philips handheld ultrasound.

\* See the Lumify website for the list of compatible smart device options:  
[philips.com/lumify-compatible-devices](https://philips.com/lumify-compatible-devices).

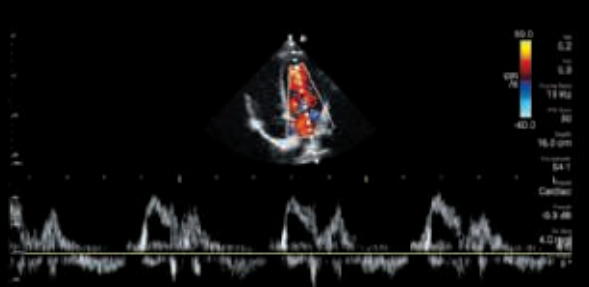




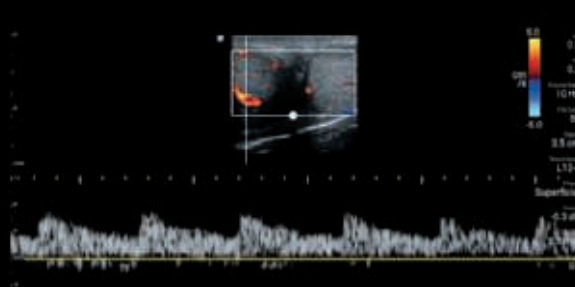
# Pulse Wave Doppler for confident hemodynamic assessment

Lumify now offers Pulse Wave Doppler\* across all clinical exams, available on all transducers for accurate quantitative analysis.

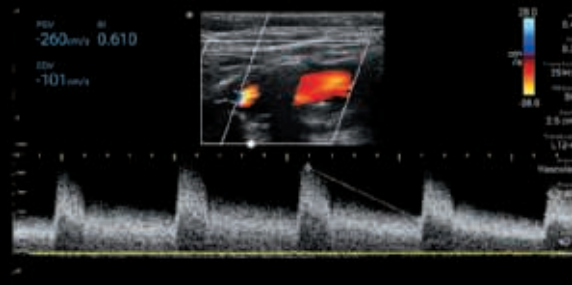
Provides comprehensive Pulse Wave Doppler measurements, iSCAN optimization and auto-linked color Doppler steering.



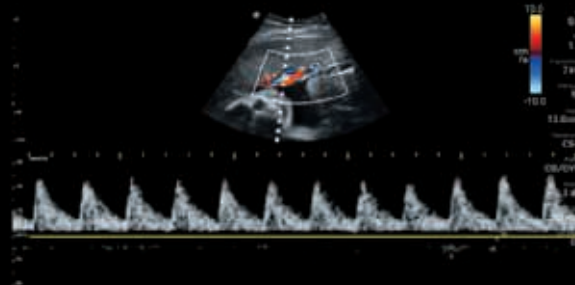
S4-1 cardiac Doppler



L12-4 testicular flow Doppler



L12-4 internal carotid artery color flow Doppler



C5-2 fetal cord Doppler

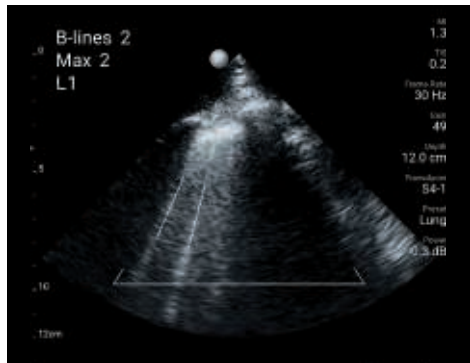
## Assess early fetal age

Tools for fetal age measurement in early gestation include crown-rump length (CRL) and mean sac diameter (MSD).\*\*

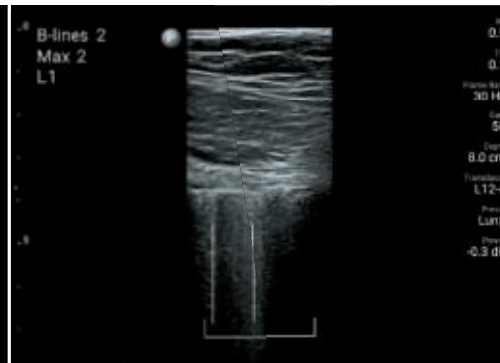


# Guided B-line quantification\* for high-quality, reliable insights in lung ultrasound

The ability to consistently and accurately identify and track the presence and severity of B-lines is vital to the treatment of critically ill patients with lung conditions. Guided B-line quantification – unique to Lumify in handheld ultrasound – delivers reproducible, reliable results that enhance your confidence when making clinical decisions.



B-line image with S4-1 transducer



B-line image with L12-4 transducer



## Reducing infection exposure

Reduce infection risk to patients and staff by covering your Lumify device with a standard transducer sleeve. Disinfect the device quickly and easily using popular low- and intermediate-level wipes.

# Decades of imaging expertise. Quality you can trust.

Lumify combines flexibility, simplicity and quality for point-of-care practitioners to support informed decisions.



Lumify  
C5-2  
broadband  
curved array  
transducer

Abdominal with lung and gallbladder  
presets and Ob/Gyn capabilities



Lumify  
L12-4  
broadband  
linear array  
transducer

Variety of clinical applications, including soft tissue,  
musculoskeletal, lung and vascular scanning



Lumify  
S4-1  
broadband  
phased array  
transducer

Presets for cardiac, abdominal  
with lung, Ob/Gyn and FAST exams

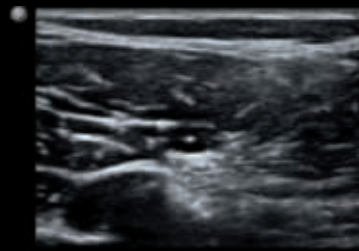




# Incredible clarity across all imaging modes



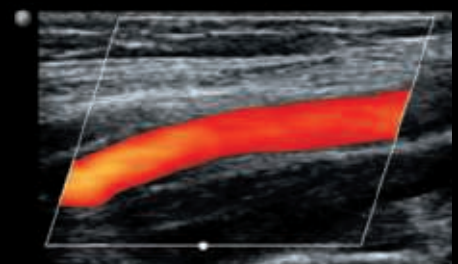
C5-2 umbilical cord with color



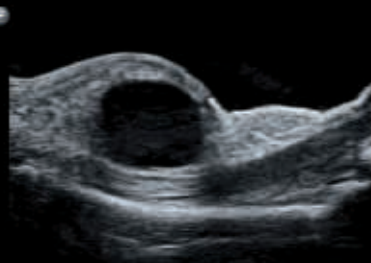
L12-4 sciatic nerve in popliteal space



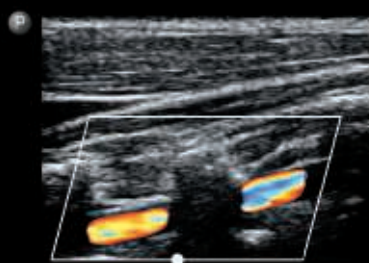
C5-2 liver and kidney



L12-4 internal carotid artery with color



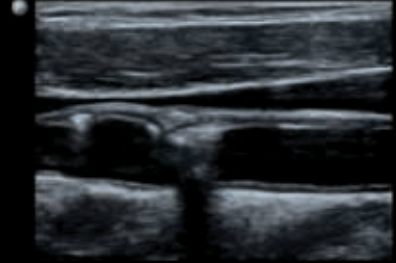
L12-4 soft tissue with cyst



L12-4 vertebral artery with color



S4-1 cardiac with M-mode



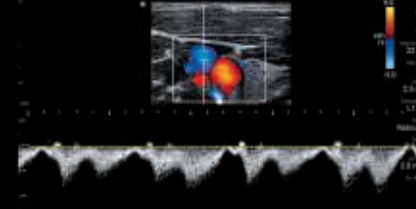
L12-4 common carotid artery with plaque



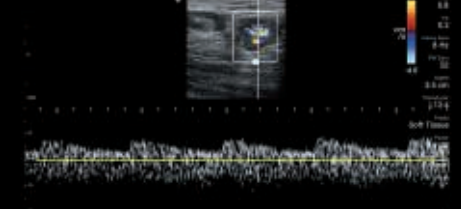
C5-2 aorta with color and Pulse Wave



C5-2 hepatic vein with color and Pulse Wave



L12-4 jugular vein with color and Pulse Wave



L12-4 lymph node with color and Pulse Wave

# Integrated tele-ultrasound.\*

## Because the world moves in real time.

The Philips Lumify integrated tele-ultrasound powered by the Reacts collaborative platform brings health professionals together with real-time video and audio calls, live ultrasound streaming and virtual guidance.

### Accessible pricing

Because Lumify works on compatible Android devices, it relieves you of the burden of paying for a custom ultrasound machine.

When you purchase Lumify, you'll receive everything you'll need to get started.

- A Philips Lumify transducer
- Lumify ultrasound app
- Ongoing software upgrades
- Manufacturer's warranty on the hardware
- Access to Philips service and education

Call **1-844-MYLUMIFY**  
or visit **[philips.com/lumify](https://philips.com/lumify)**



\* Reacts in Lumify is available on Android only.  
For a full list of compatible devices go to  
[philips.com/lumify-compatible-devices](https://philips.com/lumify-compatible-devices).



