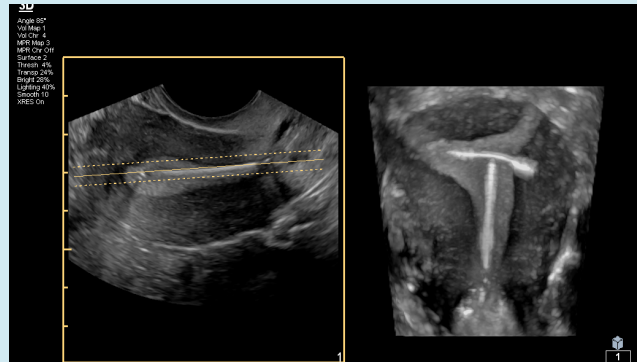


EPIQ Elite Release 4.0 & Affiniti Continuum 4.0

FlexVue | Feature Overview

Introduction to FlexVue

- Provides improved capability to manipulate MPR workflows.
- Allows for a projected view of curved structures to be displayed in one image in their entirety. Enables a user to quickly pan through a volume in a planar view.
- Tissue emphasis control in FlexVue allows for user to change the intensity projections of the MPR images.



In the example above, FlexVue reveals a misaligned IUD. Note that the left wing of the IUD has perforated the myometrium.

FlexVue Availability

TSP	3D9-3V	V6-2	V9-2	X6-1
Gyn Pelvis	EPIQ & Affiniti			EPIQ
Gyn Fertility	EPIQ			
Gyn Max Pen	EPIQ & Affiniti			
Urology-Bladder	EPIQ & Affiniti			
OB Early	EPIQ & Affiniti	EPIQ & Affiniti	EPIQ & Affiniti	EPIQ
OB NT		EPIQ	EPIQ & Affiniti	
OB Gen	EPIQ	EPIQ & Affiniti	EPIQ & Affiniti	
OB Max Pen				
Ob Fetal Heart	Affiniti	Affiniti	EPIQ & Affiniti	
OB Fetal Echo	EPIQ	EPIQ		
Early Fetal Echo				

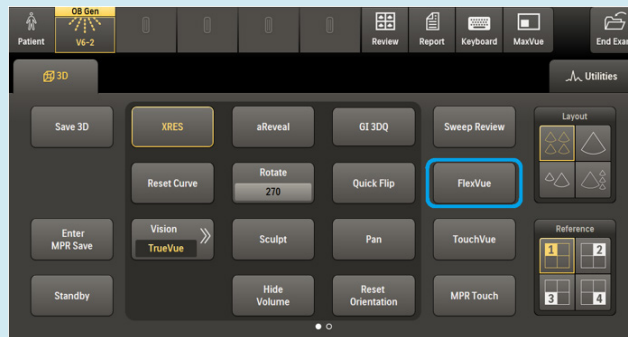
TSP not available

FlexVue | Feature Overview

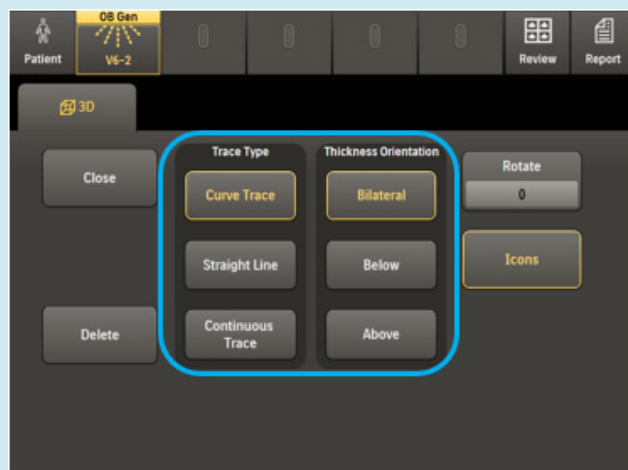
FlexVue Workflow

Following a 3D acquisition, FlexVue is available on the 3D Tab on the touch screen.

1. Press FlexVue to view the FlexVuecontrols on the touch screen.



2. To launch a FlexVue trace, choose a Trace Type.



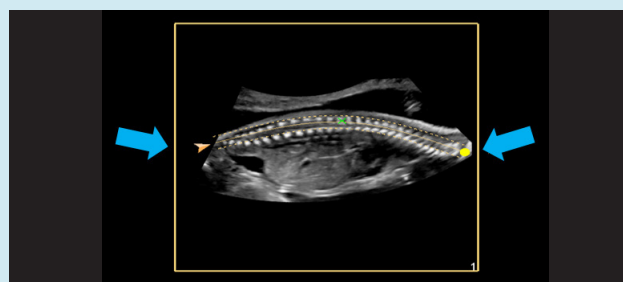
3. Then choose a Thickness Orientation.

Note: Cursor must be deactivated in order to launch the FlexVue Trace

4. Place the cursor where you want to start the traceline and press Set. Use the trackball to draw the trace line and then press the Set button to place the end position of the trace line.



- The solid line between the arrow and circle icons is the trace line.
- The dotted lines positioned along the trace line indicate the Thickness Orientation.



The trace line start and end points are the arrow and dot icons. They can be placed in any position on the image.

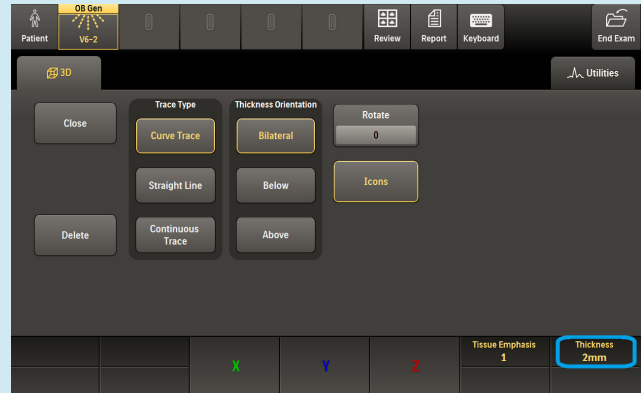
Tip: Press the Icons button on the FlexVue page to toggle them on and off.

FlexVue | Feature Overview

FlexVue Workflow

Note: Each of the 3 Trace types can be combined with a Thickness Orientation for the desired view.

- Bilateral Thickness Orientation: 2 dotted lines above and below the solid trace line.
- Below Thickness Orientation: a single dotted line below the solid trace line.
- Above Thickness Orientation: a single dotted line above the solid trace line.

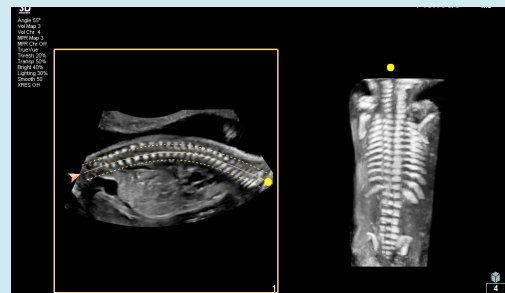
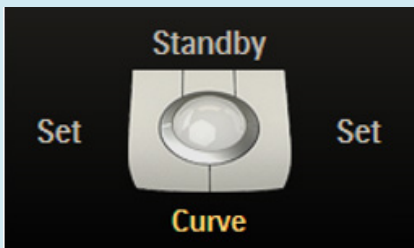


5. Use the Rotary Thickness control to choose a thickness value from 0 mm to 10 mm.

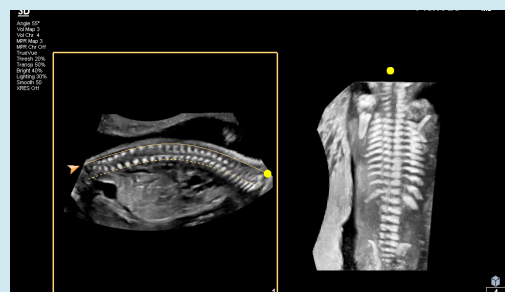
Curve Trace Workflow

Curve Trace allows curved anatomy on an MPR to appear flat when displayed in a projected view.

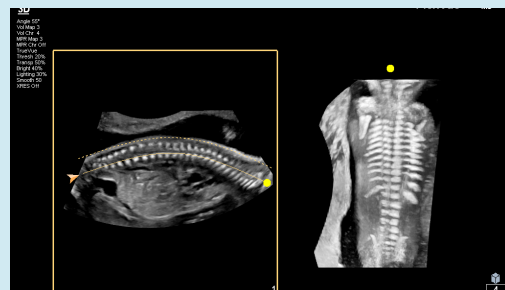
After pressing the Set key to place the Curve Trace end position, the trackball arbitration changes to allow the user to use the trackball to position the curve apex



Curve Bilateral



Curve Below

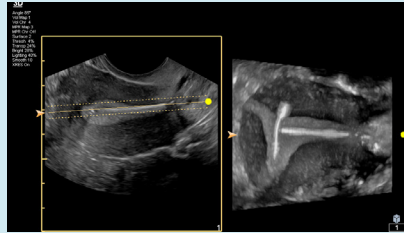


Curve Above

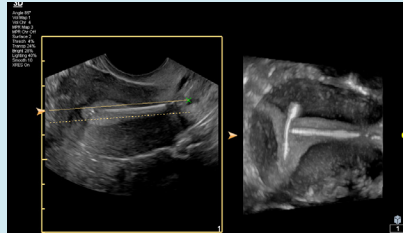
FlexVue | Feature Overview

Straight Trace Workflow

These Straight Line Trace examples show a 3D uterus with an intrauterine device (IUD).



Straight Line Bilateral



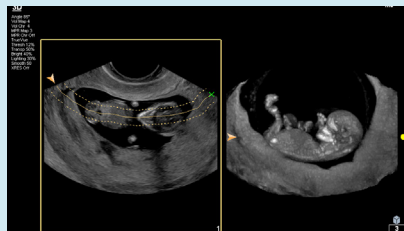
Straight Line Below



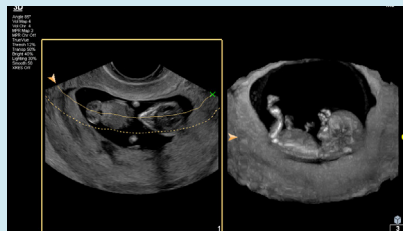
Straight Line Above

Continuous Trace Workflow

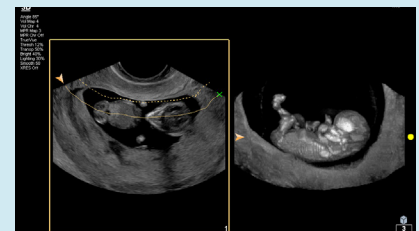
Continuous Trace allows more freedom to draw the FlexVue line. Think of it like drawing a line freehand.



Continuous Trace Bilateral



Continuous Trace Below

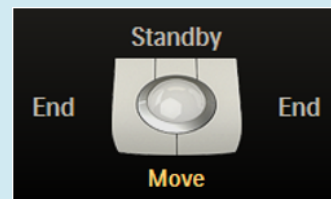


Continuous Trace Above

Secondary Workflows

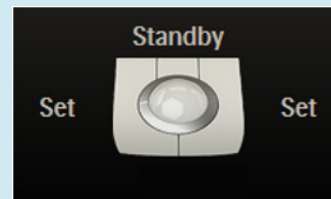
Move Workflow

After positioning the trace, press the left or right trackball Set button again to set the position. The trackball arbitration changes, allowing the user to move the trace on the image.



End a FlexVue Operation

Once the trace is in the desired position, press Set once more to complete the FlexVue operation. The trace and thickness lines become white when the operation is ended.



Tip: The user can manipulate the X, Y, Z rotary controls to adjust the position of the 2D data while the FlexVue trace maintains a fixed position.

FlexVue | Feature Overview

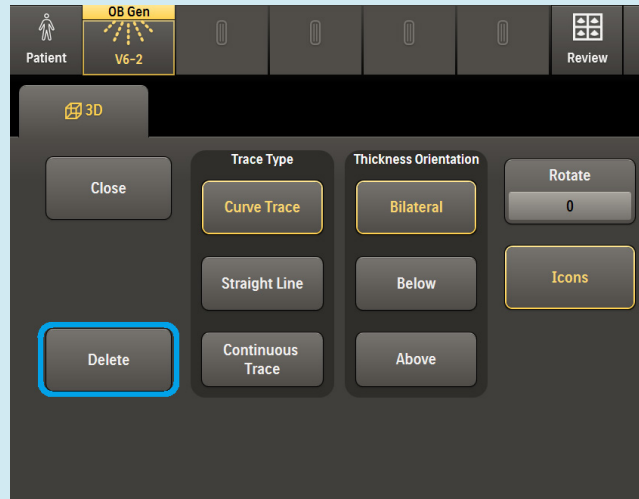
Secondary Workflows

Delete Workflow

To remove a FlexVue trace and start over, on the touch screen, press:

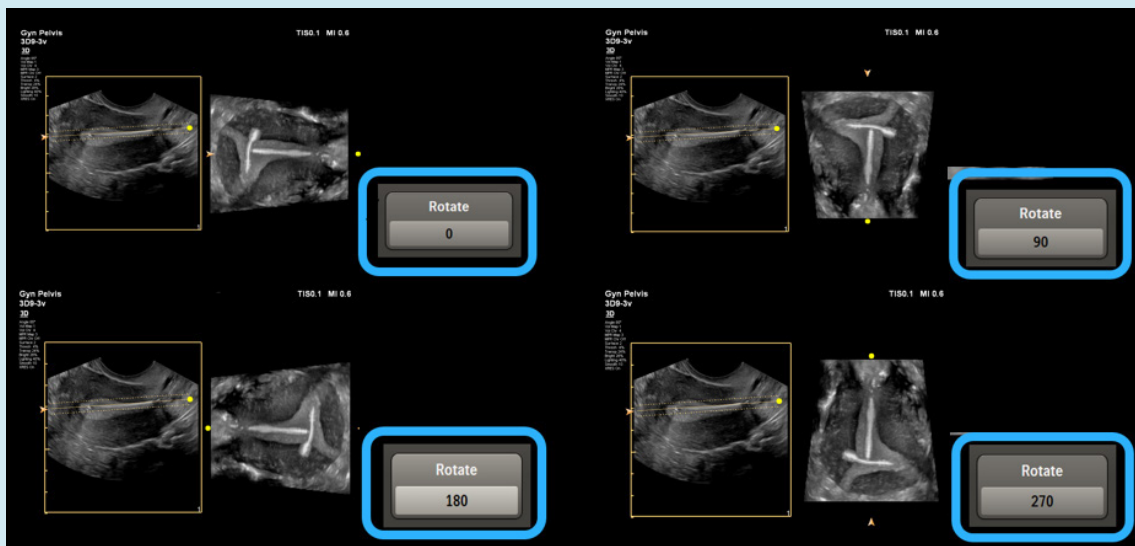
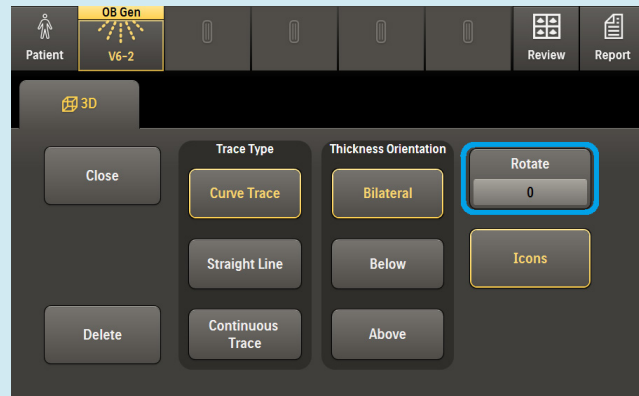
- Delete
- OR
- A new trace type

Note: Do not use Erase on the control panel.



Render Rotation Workflow

Render Rotation rotates the FlexVue rendering in 90 degree increments.



Note the position of the trace line icons rotated 90 degrees in each image.

FlexVue | Feature Overview

Secondary Workflows

One Up /Two Up Display workflow

Pressing Set to complete the trace operation makes the One Up and Two Up Display options available.

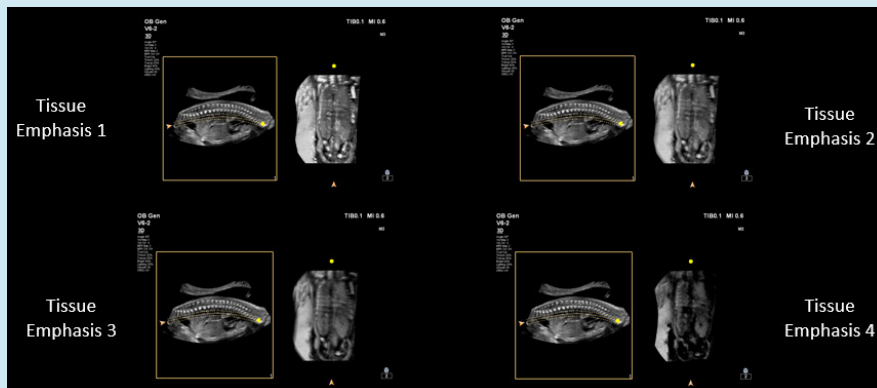
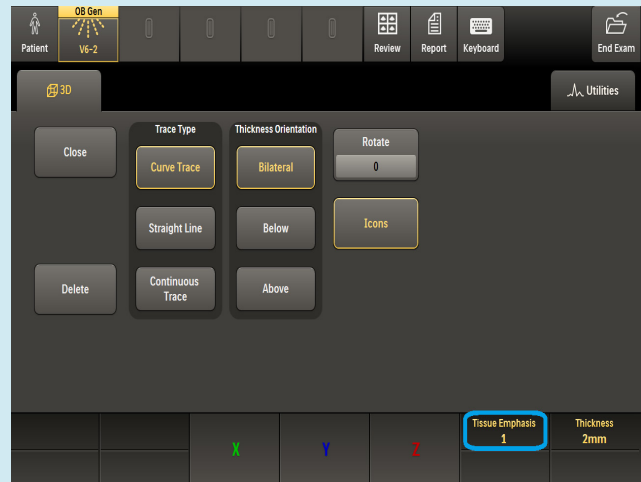
- The One Up layout shows the FlexVue rendered image.
- The Two Up layout shows both the original image view and the FlexVue view.



Tissue Emphasis Control

The Tissue Emphasis control provides four settings that change the appearance of the strong interfaces from intense to soft.

The example below shows the 4 different Tissue Emphasis choices using the same FlexVue image. Tissue Emphasis 1 shows the maximum intensity and the image gradually gets softer as we advance to Tissue Emphasis 4.



Please consult the user manual for further information.

© 2019 Koninklijke Philips N.V. All rights are reserved.
Philips reserves the right to make changes in specifications and/or to discontinue any product at any time without notice or obligation and will not be liable for any consequences resulting from the use of this publication. Trademarks are the property of Koninklijke Philips N.V. or their respective owners.



philips.com

Printed in The Netherlands.
4522 991 44621 * JAN 2019