



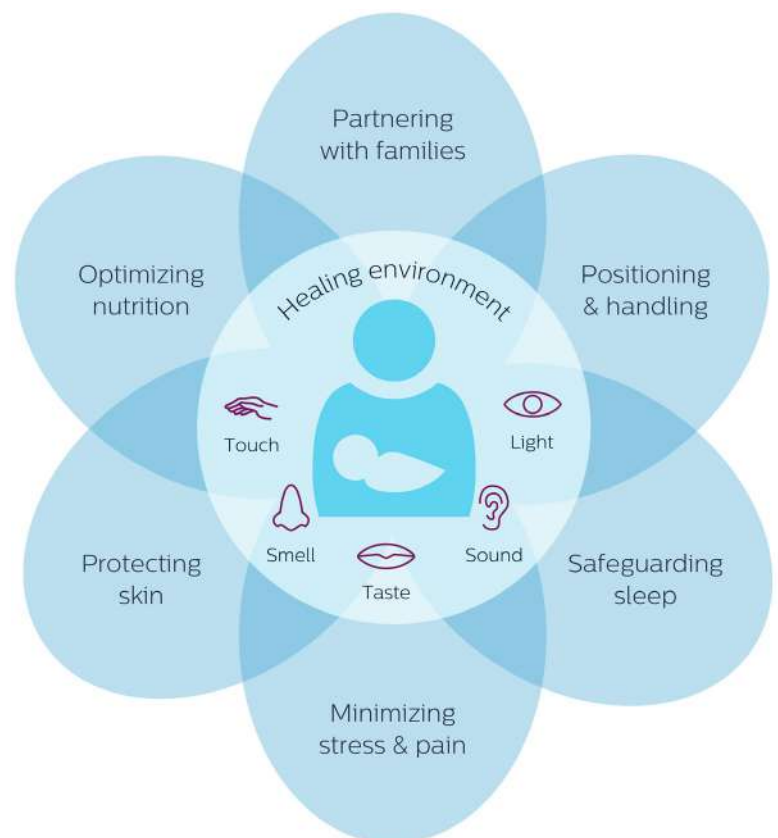
# Create a healing NICU environment for preterm and critically-ill infants, their families and NICU professionals

## Philips Wee Care™ Healing Environment

Created over 40 years ago, the Philips Wee Care™ Program is designed to positively impact outcomes for premature and critically-ill infants in the NICU while supporting their families. Internationally recognized, this quality and process improvement program focuses on the Neonatal Integrative Developmental Care Model: Seven Core Measures.

### The core of the developmental care model: Healing Environment

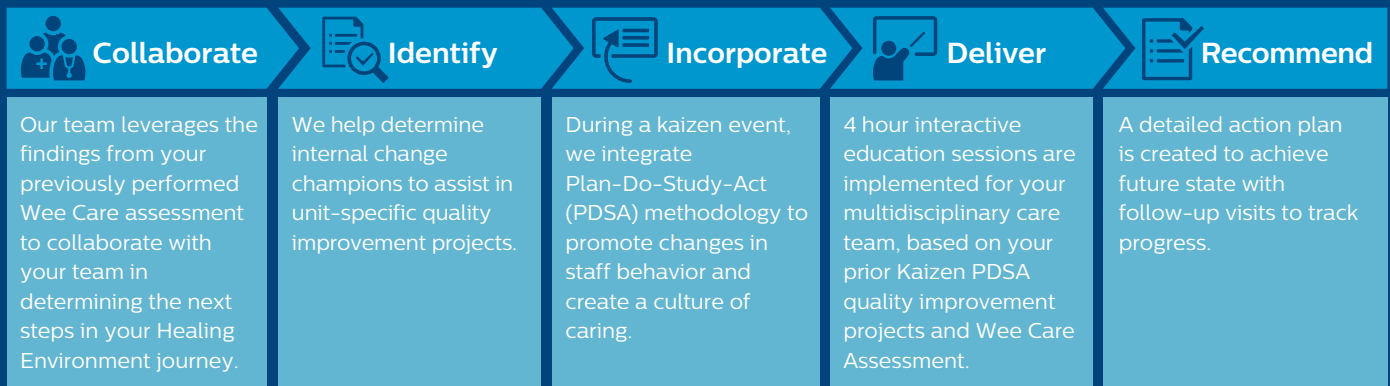
The comprehensive Healing Environment program – performed by an experienced NICU team – includes education of staff who interact in the NICU environment (nursing, ancillary, pharmacy, environmental services, etc.) and focuses on adoptable strategies that can create an environment to support sensory development.



# Empowering you to deliver a standardized and consistent approach to family-centered, developmentally-supportive care

Using our validated in-depth assessment tool, developed from evidence-based best practices in family-centered developmental care, the NICU team focuses on the physical environment, staff, family and patient relationships, including the five sensory components that make up a healing environment: vision (light), sound (auditory), smell (olfactory), taste (gustatory) and touch (tactile, proprioception, vestibular).

## Together with your NICU professionals and our team, we:



Philips Healthcare Clinical Professional Services is a Provider approved by the California Board of Registered Nursing, Provider Number CEP17496. The Healing environment program is approved for 4 contact hours.

## The Healing Environment Program is designed to:



**Increase staff knowledge evidence-based practices of developmental care and integrate neuroprotective family-centered care practices with measurable outcomes to create a healing environment in the NICU.**<sup>3,4,5</sup>



**Minimize the negative impact of the NICU environment and stressors to patients, families, and NICU professionals while improving satisfaction scores.**<sup>1,2,3,5</sup>



**Decrease length of stay and healthcare costs.**<sup>1,5</sup>

Let Philips help you positively impact neonatal outcomes in your NICU.

**Contact your Philips Sales Rep or click here to visit our website today.**

### References

1. Altimier, L. B., Eichel, M., Warner, B., Tedeschi, L., & Brown, B. (2005). Developmental care: changing the NICU physically and behaviorally to promote patient outcomes and contain costs. *Neonatal Intensive Care*, 18(4), 12-16.
2. Altimier, L., & Phillips, R. M. (2013). The neonatal integrative developmental care model: Seven neuroprotective core measures for family-centered developmental care. *Newborn and Infant Nursing Reviews*, 13(1), 9-22. <https://doi.org/10.1053/j.nainr.2012.12.002>
3. Altimier, L., Kenner, C., & Damus, K. (2015). The wee care neuroprotective NICU program (Wee Care): The effect of a comprehensive developmental care training program on seven neuroprotective core measures for family-centered developmental care of premature neonates. *Newborn and Infant Nursing Reviews*, 15(1), 6-16. <https://doi.org/10.1053/j.nainr.2015.01.006>
4. Cardin, A. D., Rens, L., Stewart, S., Danner-Bowman, K., McCarley, R., & Kopsas, R. (2015). Neuroprotective core measures 1-7: a developmental care journey: Transformations in NICU design and caregiving attitudes. *Newborn and Infant Nursing Reviews*, 15(3), 132-141. <https://doi.org/10.1053/j.nainr.2015.06.007>
5. Hendricks-Muñoz, K. D., Prendergast, C. C., Caprio, M. C., & Wasserman, R. S. (2002). Developmental care: The impact of Wee Care developmental care training on short-term infant outcome and hospital costs. *Newborn and Infant Nursing Reviews*, 2(1), 39-45. <https://doi.org/10.1053/nbin.2002.31492>

