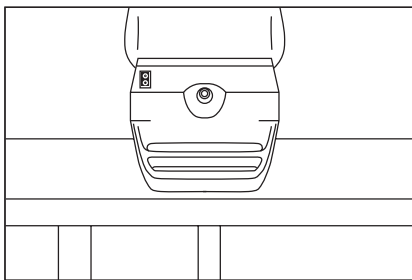


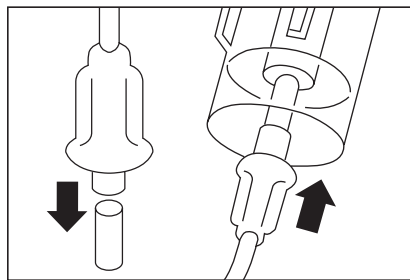
# Quick start guide



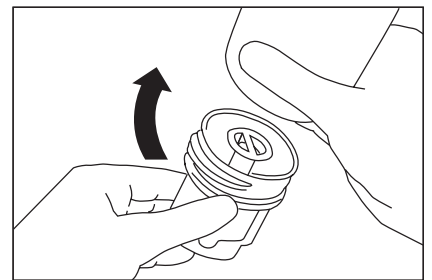
Read the user manual that accompanies the SideStream Plus product packaging before using this product for the first time.



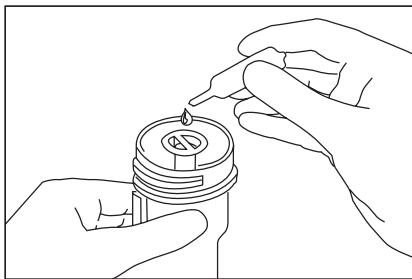
1 Place compressor on a solid surface



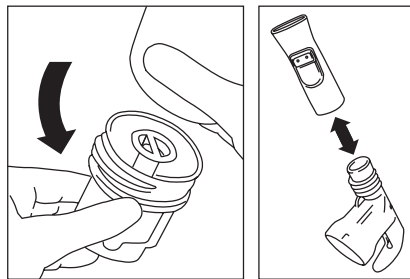
2 Connect tubing to the compressor and medicine cup



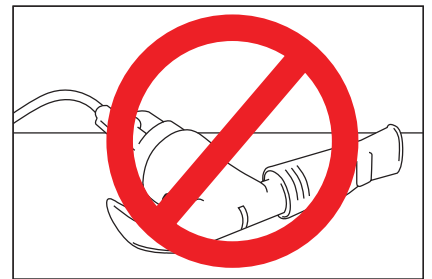
3 Unscrew lid



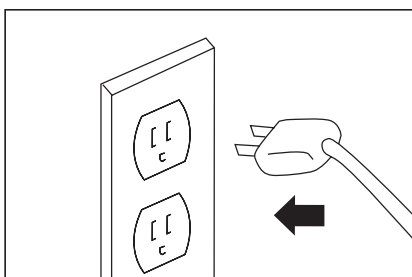
4 Fill medicine cup



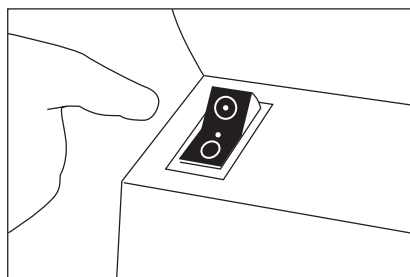
5 Replace lid and connect mouthpiece



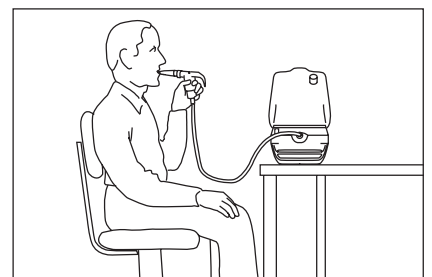
Do not tip SideStream Plus



6 Plug compressor into outlet

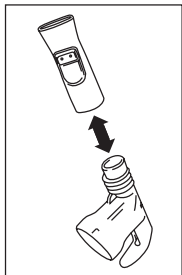


7 Turn on switch

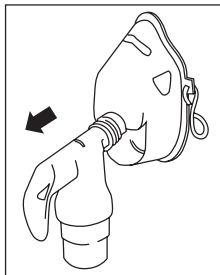


8 Sit upright, relax, and slowly breathe in and out

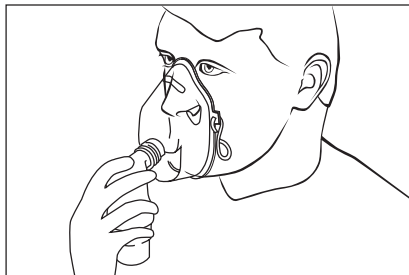
## If you need to use an adult or pediatric mask . . .



1 Remove mouthpiece and attach mask



2 Place mask over nose and mouth

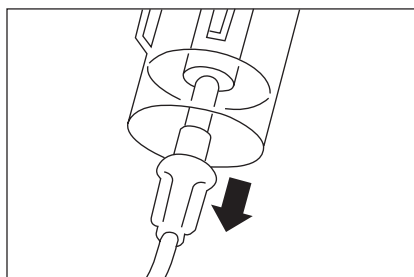


3 Place strap over head and adjust

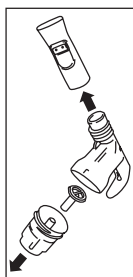


## Cleaning instructions

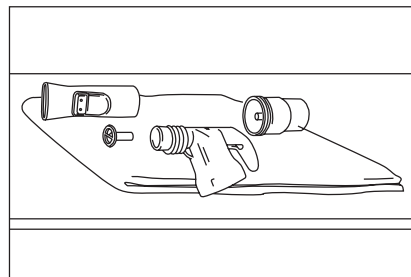
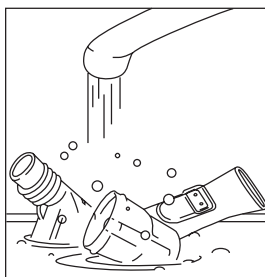
After every use...



1 Disconnect handset from tubing

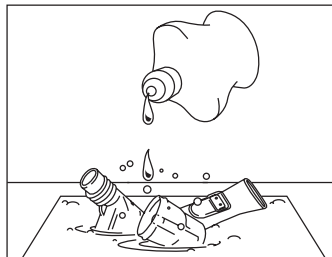


2 Disassemble and wash all parts in warm, soapy water

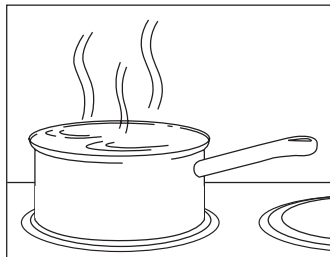


3 Rinse in clean water and air dry

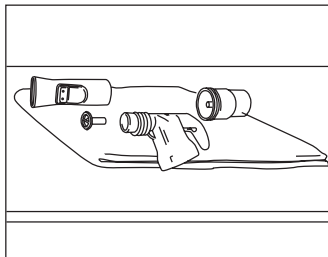
Once each week...



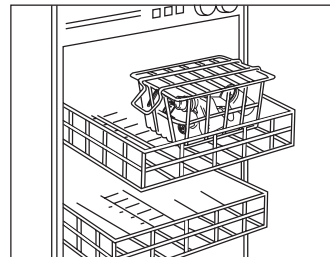
1 Place parts (except tubing) in water and 2-3 drops of dishwashing liquid



2 Boil 10 minutes



3 Rinse in clean water for 2 minutes and air dry



May be washed once a week on top rack of dishwasher, within basket

## Replace SideStream Plus after six months of use

Philips Respironics and SideStream are trademarks of Koninklijke Philips N.V. and its affiliates.

© 2015 Koninklijke Philips N.V. All rights are reserved. Philips Healthcare reserves the right to make changes in specifications and/or to discontinue any product at any time without notice or obligation and will not be liable for any consequences resulting from the use of this publication.

CAUTION: US federal law restricts these devices to sale by or on the order of a physician.



Respironics Respiratory Drug Delivery (UK) Ltd  
Chichester Business Park, City Fields Way  
Tangmere, Chichester, PO20 2FT UK

Customer Service  
+1 724 387 4000  
800 345 6443 (toll free, US only)

[www.philips.com/respironics](http://www.philips.com/respironics)

Broudy EL 8/25/15 MCI 4106843 PN 1125101