

HEALTHCARE IT's EVOLUTION:

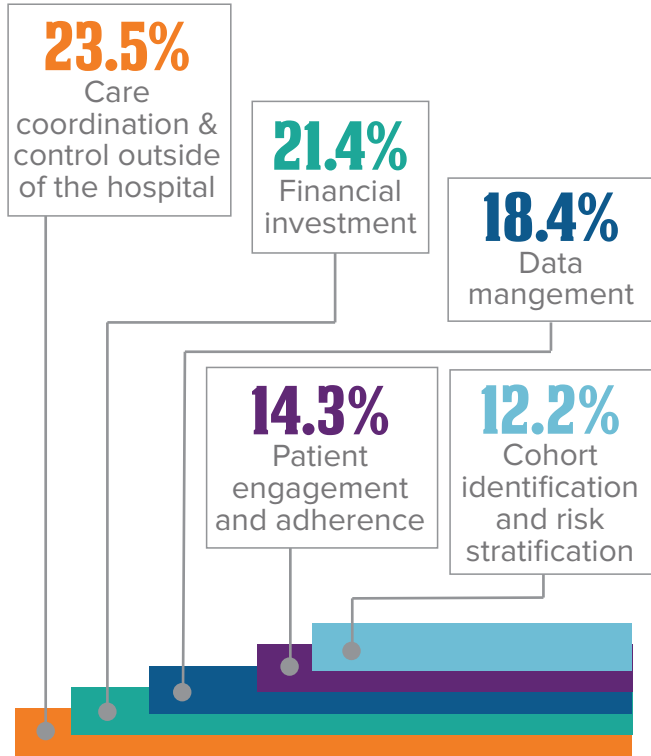
Connecting care for continuous health

Hospitals and IDNs are continuing to invest in new technologies that support collaborative care across the continuum, according to 2013-2015 surveys conducted by HIMSS Analytics on behalf of Philips Healthcare. In this 2016 survey update, population health has emerged as one of the major goals of connected care. To address such a broad initiative, hospitals and IDNs are looking to cloud-based technology to tackle scalability and cost challenges. Of the 105 respondents:



CARE COORDINATION STILL A CHALLENGE

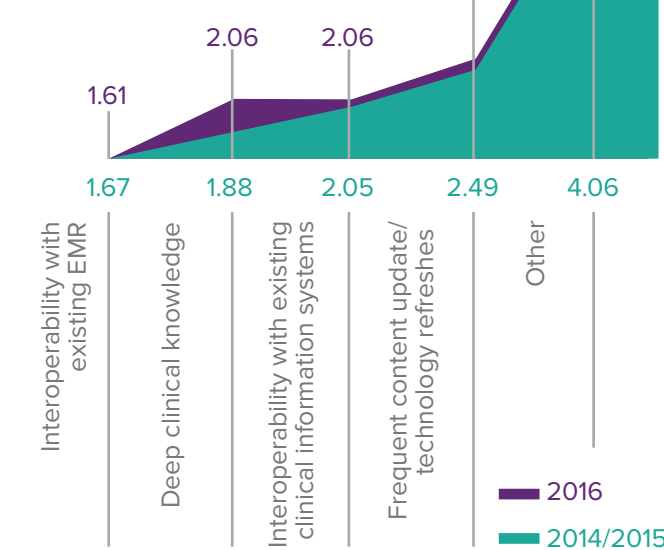
As healthcare organizations deploy population health programs, care coordination is the biggest management issue.



The percentages above represent respondents who selected the option as the biggest challenge. On a scale of 1 to 3, with 1 being the biggest challenge and 3 being the third biggest challenge.

INTEROPERABILITY IS KEY

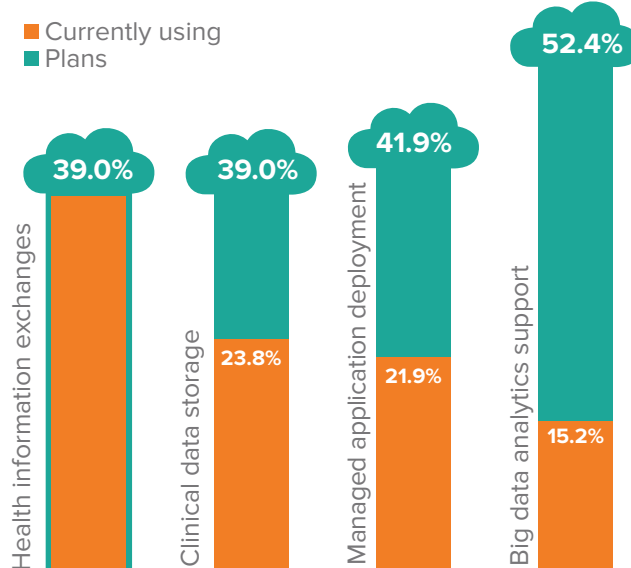
In addition to seeking solutions that drive measurable improvements, healthcare organizations want to partner with a clinical informatics vendor that enables interoperability with their EMRs and other clinical IT systems.



(Importance was rated on a 1 to 5 scale with 1 being the most important and 5 being the least important. For those who ranked "other" as the most important, support, reliability and ease of use were the most common attributes listed.)

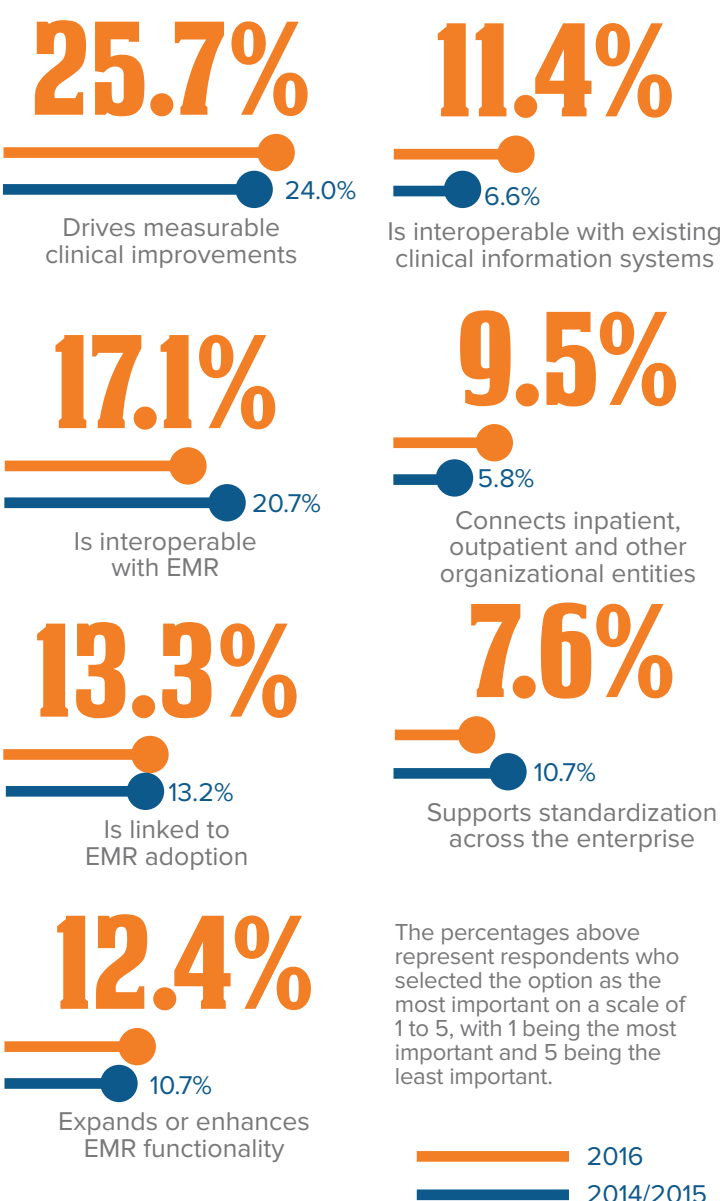
CLOUD-BASED TECHNOLOGY

Cloud-based technology offers flexibility, scalability and cost efficiencies: Healthcare organizations are looking to the cloud to support their various IT initiatives.



SUCCESS OF POPULATION HEALTH

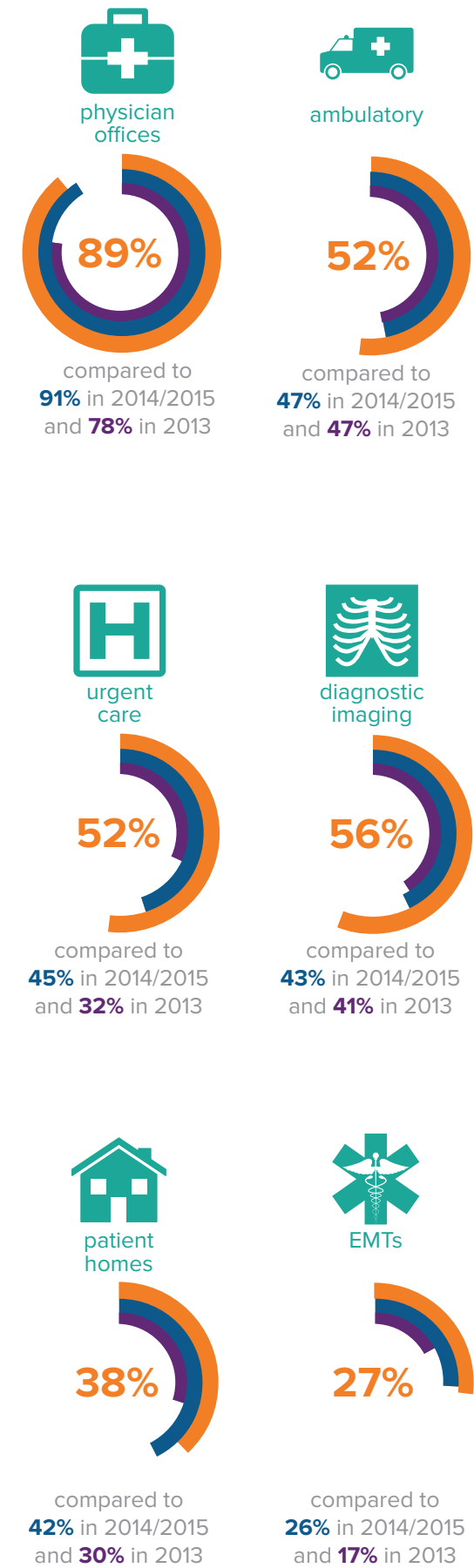
The success of population health relies on achieving measurable clinical improvements. Therefore, clinical IT purchasing decisions hinge on whether solutions can drive measurable improvements.



The percentages above represent respondents who selected the option as the most important on a scale of 1 to 5, with 1 being the most important and 5 being the least important.

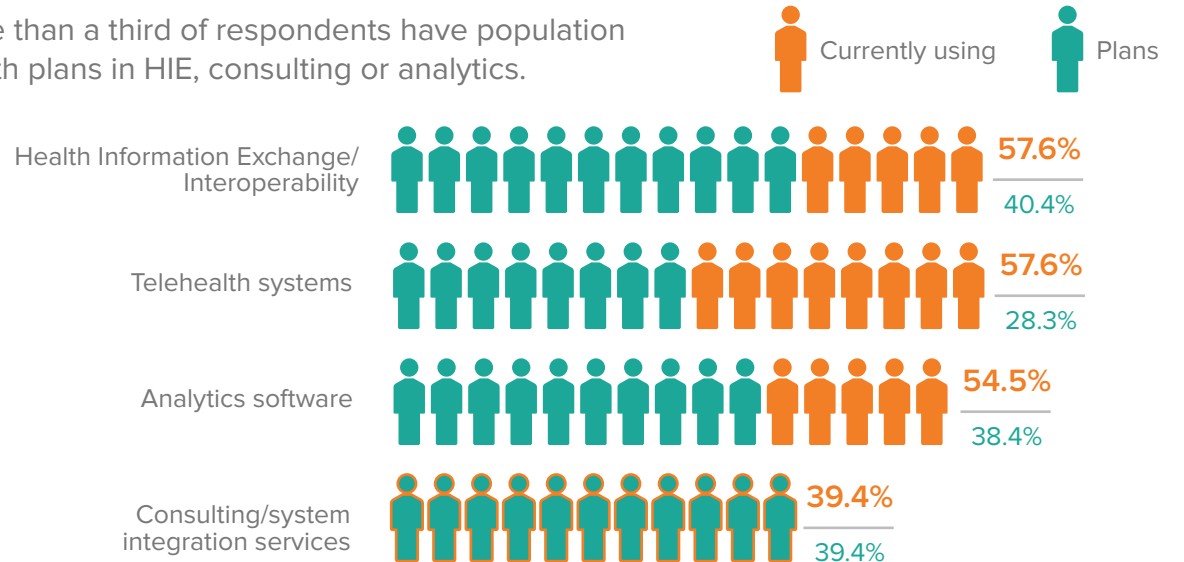
ROLE OF HEALTHCARE IT SHIFTS

Healthcare IT is expanding its focus beyond compliance to include a greater emphasis on the patient for more advanced patient-centric care.



POPULATION HEALTH PLANS

More than a third of respondents have population health plans in HIE, consulting or analytics.



PROGRAM IMPLEMENTATION

Nearly half of respondents have home monitoring device, aging well/elderly care or mobile wellness monitoring plans. Many patient care programs have a great need for IT solutions, as respondents report more planning of these programs than actual implementation.

